

sistema de gradeamento e corrimão

railing and handrail system

système de garde-corps et main courante



SISTEMAS
EURO 2000®
PERFIS DE ALUMÍNIO E VIDROS PARA ARQUITECTURA

Características do Sistema

System features

Caractéristiques du système



Sistema de alumínio certificado pelo CEBTP (*Centre Expérimental de recherches et d'études du Bâtiment et des Travaux Publics*), que com a sua versatilidade materializada na excelente qualidade dos acessórios que o compõe, consegue fazer frente a qualquer tipo de gradeamento ou corrimão de escada, por muito original que sejam as suas formas. As diferentes tipologias que podem ser executadas cobrem na totalidade as necessidades da construção, podendo valorizar, quer habitações tradicionais, quer a construção moderna.

Aluminium system certified by CEBTP (*Centre Expérimental de recherches et d'études du Bâtiment et des Travaux Publics*), which relying on its versatility materialized on the excellent quality of its composing accessories can be used with any sort of railing or staircase banister, notwithstanding how original their shapes may be. The different performable typologies fully cover the needs in the construction sphere, being a possible enhancement to both traditional inhabitations and modern buildings.

Système en aluminium certifié par le CEBTP (*Centre Expérimental de recherches et d'études du Bâtiment et des Travaux Publics*), dont la fiabilité ajoutée à l'excellente qualité des accessoires qui le compose, permet de réaliser tout type de garde-corps ou de rampe d'escalier, aussi originaux que soient ses formes. Les différents projets pouvant être exécutés couvrent la totalité des besoins en matière de construction et peuvent mettre en valeur les constructions traditionnelles comme modernes.

Corrimão: Handrail Main courante	Decorativa: 80x51mm Decorative Décorative
Prumo: Column Poteau	Secção rectangular 50x50mm Rectangular section Section rectangulaire
Grade: Railing Barreau	Secção rectangular 28x15mm Rectangular section Section rectangulaire
Pateres: Column support Sabot sur dalle	Zamac Zamak Zamak
Acessórios: Accessories Accessoires	Para várias situações (escadas, ângulos verticais ou horizontais) Unicamente em lacado For various situations (stairs, vertical or horizontal angles) Only lacquered Pour diverses situations (escaliers, angles verticaux ou horizontaux) Seulement laqué
Distância máxima entre prumos: Maximum distance between columns Distance maximale entre poteaux	1,00mm
Acabamentos: Finishes Finitions	Lacados Anodizados Powder coating Anodizing Laqué Anodisé

*** EUROPEAN
ALUMINIUM ASSOCIATION
QUALANOD
Licença nº. 1406 - Metalfer
Licença nº. 1411 - Alfa Sul

QUALICONT
Licença nº. 809



3

Listagem de perfis

Profiles list

Liste des profils

7

Acessórios

Accessories

Accessoires

13

Pormenores de montagem

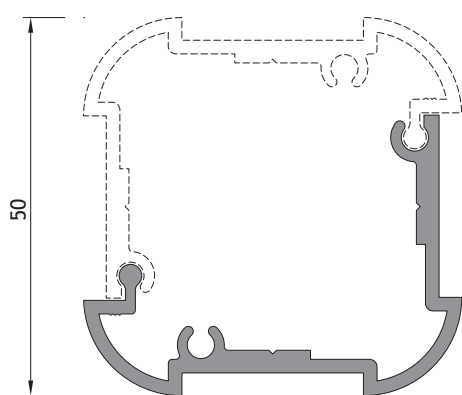
Assembly details

Détails d'assemblage

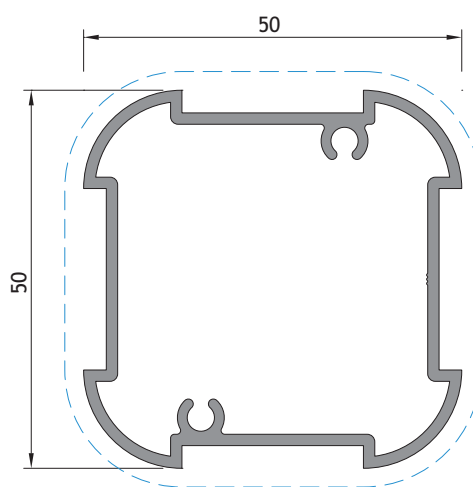
Listagem de perfis

Profiles list

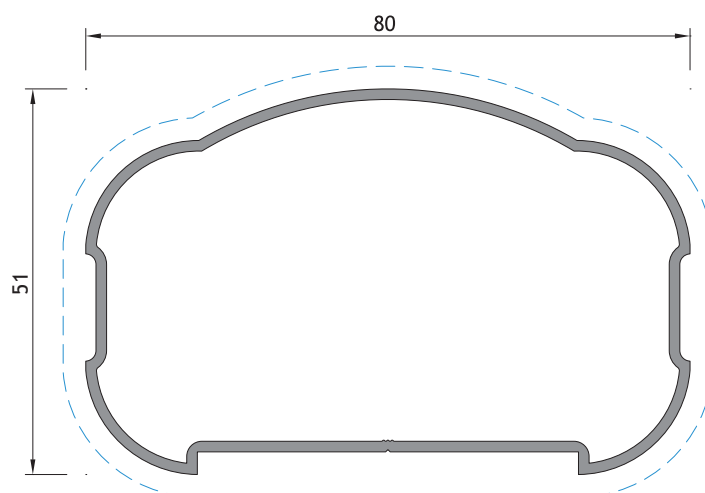
Liste des profils



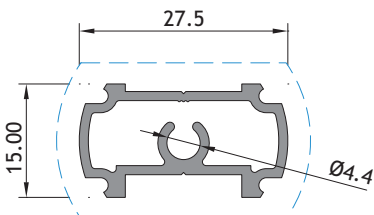
NG 05



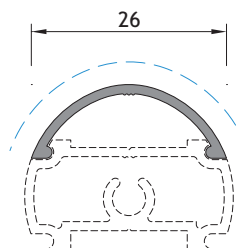
NG 06



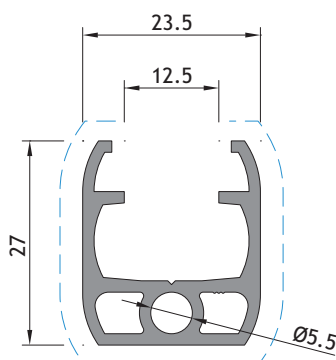
NG 10



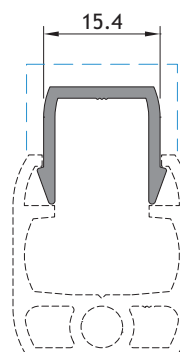
NG 13



NG 14



NG 15



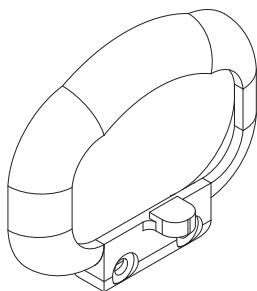
NG 16



Acessórios

Accessories

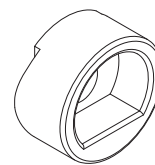
Accessoires



Para o perfil NG 10

207330

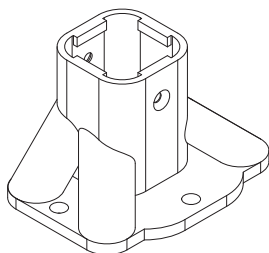
REIMATE PAREDE AR-403



Para os perfis NG 13 e NG 14

232090

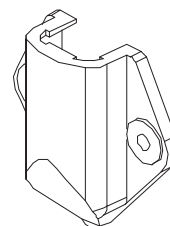
UNIÃO HORIZONTAL AR-424



Para os perfis NG 05 e NG 06

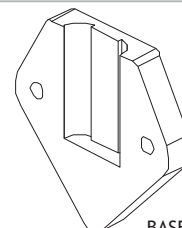
206140

PATER VERTICAL AR-416



PATER

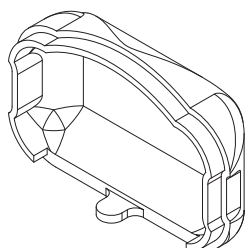
206096
214015



BASE

Para os perfis NG 05 e NG 06

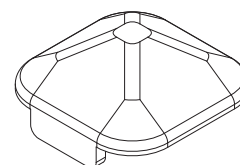
PATER LATERAL AR-433
BASE PARA PATER AR-433



Para o perfil NG 10

207266

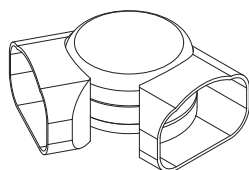
TAMPA AR-406



Para os perfis NG 05 e NG 06

207331

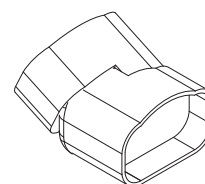
TAMPA AR-420



Para o perfil NG 10

213300

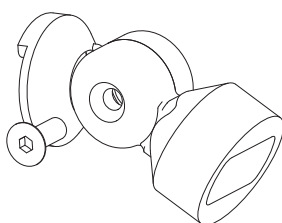
ÂNGULO REGULÁVEL HORIZONTAL AR-428



Para o perfil NG 10

213295

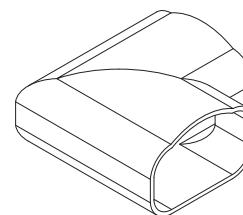
ÂNGULO REGULÁVEL VERTICAL AR-430



Para os perfis NG 13 e NG 14

232125

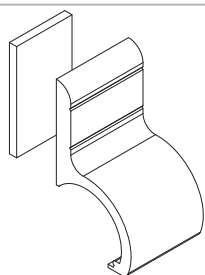
UNIÃO ÂNGULO REGULÁVEL AR-432



Para o perfil NG 10

213292

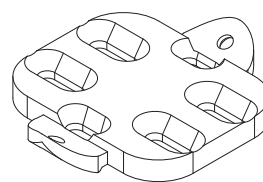
ÂNGULO RETO AR-427



Para aplicação dos gradeamentos de prumos verticais com avanço

232130

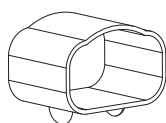
FIXADOR COM AVANÇO AR-425



Para os perfis NG 05 e NG 10

221200

FIXADOR PASSA-MÃO AR-429



Para ligação dos perfis NG 10

232140

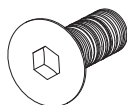
UNIÃO PASSA-MÃO AR-431



Para colocar as grades decorativas no perfil NG 15

207510

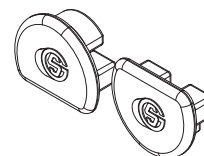
PRESILHA MIS-000-027



Para fixar o perfil NG 15

290037

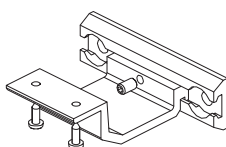
PARAFUSO PARA UNIÃO SA 2001G



Aplicar nos perfis NG 13 em tipologias com avanço

212347

CONJUNTO TOPO NG AR-439 Preto



Material: Alumínio

230500

SUPOORTE DE FIXAÇÃO RA 634



Junta de vedação elástica, resistente aos UV
Impede a corrosão de penetrar pelas zonas cortadas

208019

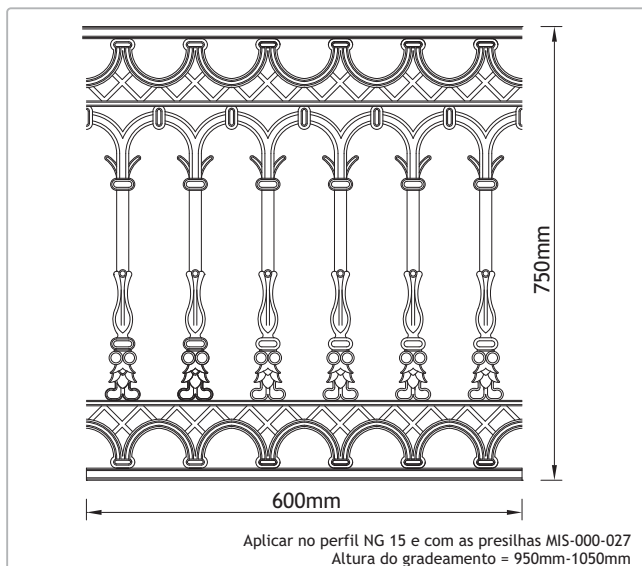
SELA JUNTAS 150gr. (Cinza)



Limpeza de alumínio lacado ou anodizado
Para preparação das zonas a serem unidas e limpeza final

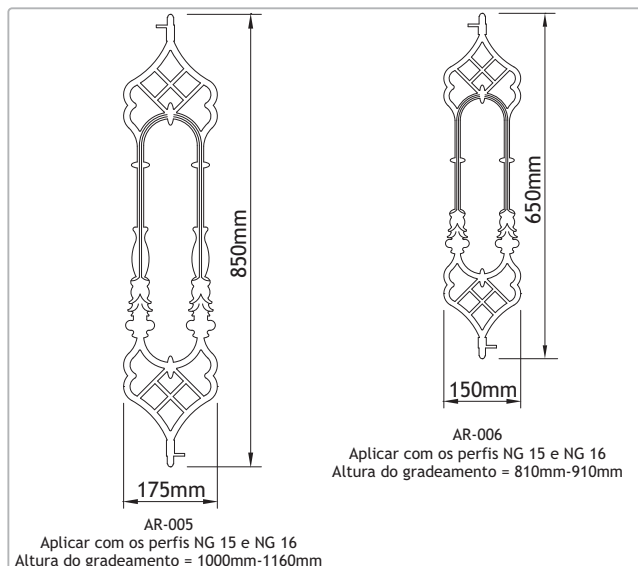
208704

PRODUTO DE LIMPEZA DE ALUMÍNIO (1L) Transparente



228138

MÓDULO DECORATIVO ALD-010

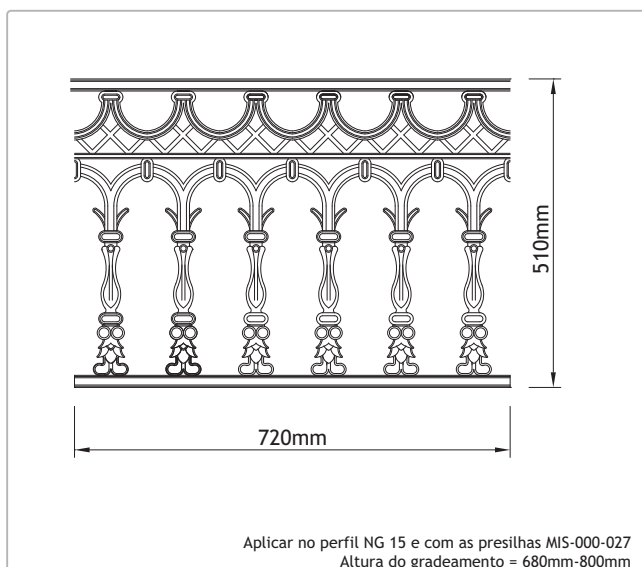


220133

220005

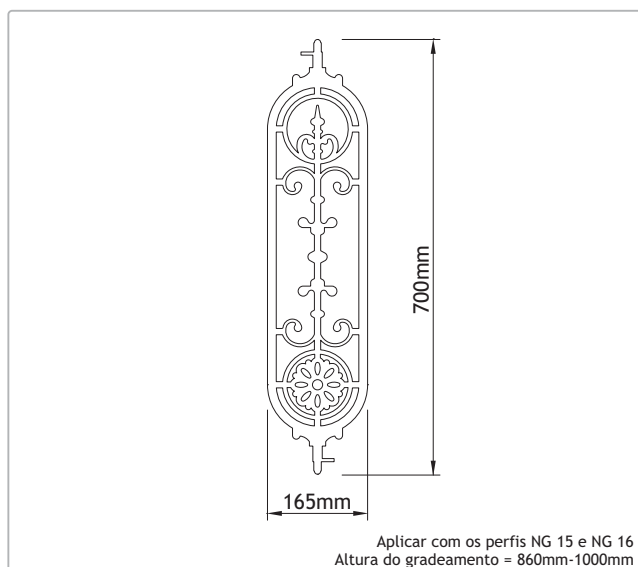
ELEMENTO DECORATIVO AR-005

ELEMENTO DECORATIVO AR-006



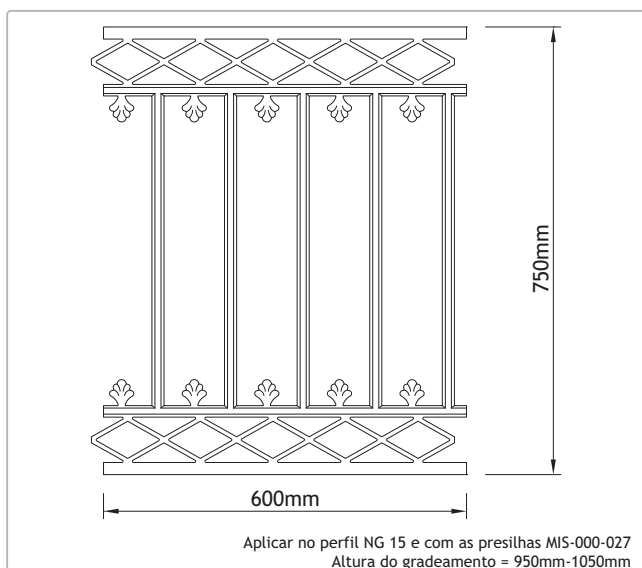
228141

MÓDULO DECORATIVO ALD-011



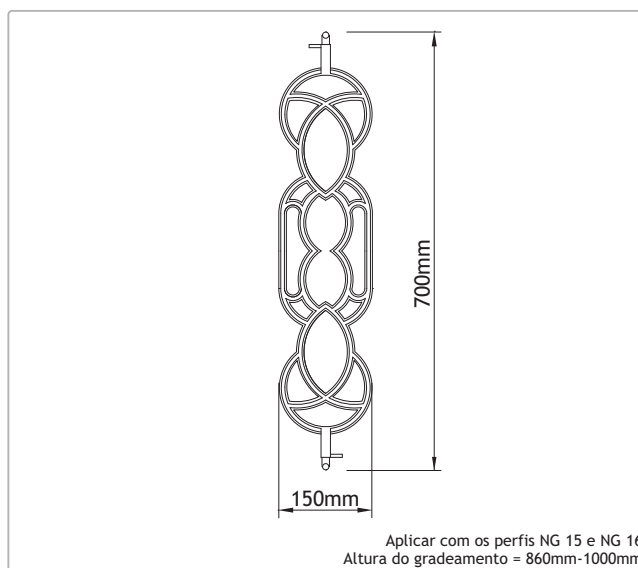
220134

ELEMENTO DECORATIVO AR-023



228230

MÓDULO DECORATIVO ALD-21



220132

ELEMENTO DECORATIVO AR-001





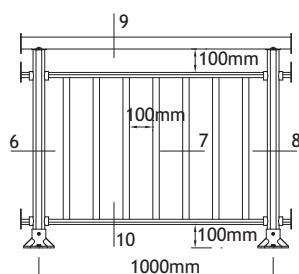
Pormenores de montagem

Assembly details
Détails d'assemblage

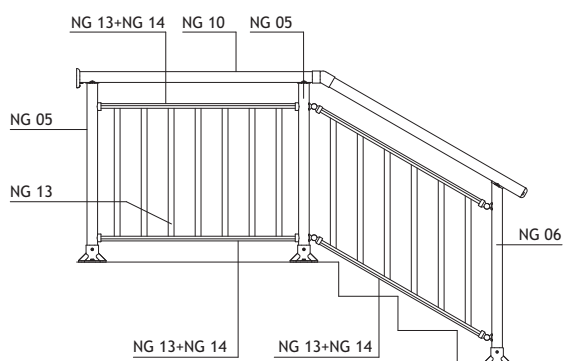
GUARDA-CORPOS COM GRADEAMENTO NA VERTICAL

VERTICAL RAILING

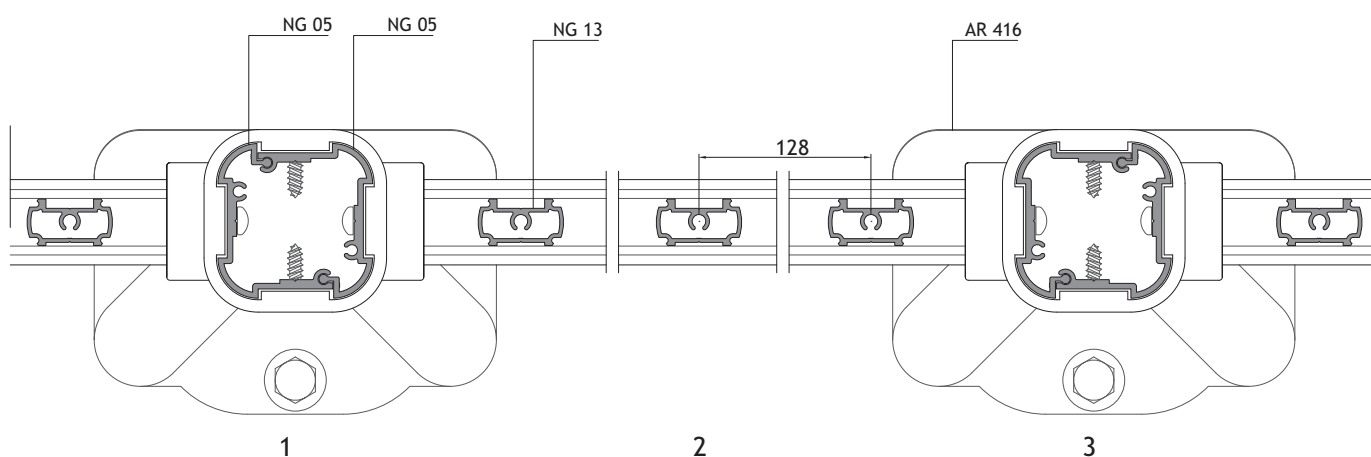
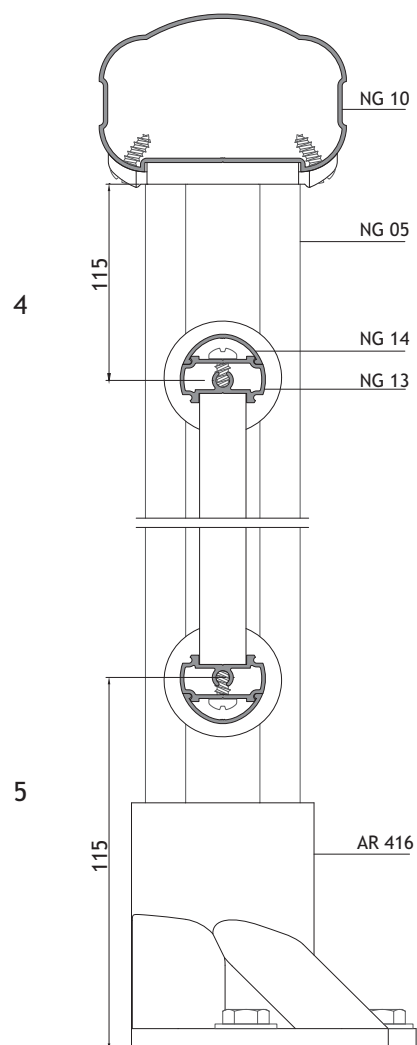
GARD-CORPS AVEC BARREAUDAGE VERTICAL



GRADEAMENTO ENTRE PRUMOS
VERTICAL RAILING BETWEEN COLUMNS
BARREAUDAGE ENTRE POTEAUX



PERMITE APLICAÇÃO EM TIPOLOGIAS DE ESCADA
ALLOWS APPLICATION ON STAIRS
PERMET APPLICATION DANS L'ESCALIERS

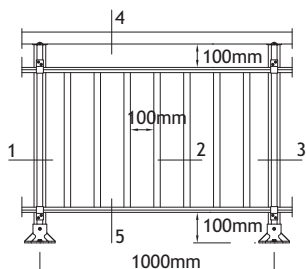


S/ESC.

GUARDA-CORPOS COM GRADEAMENTO NA VERTICAL

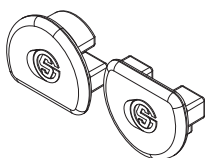
VERTICAL RAILING

GARD-CORPS AVEC BARREAUDAGE VERTICAL

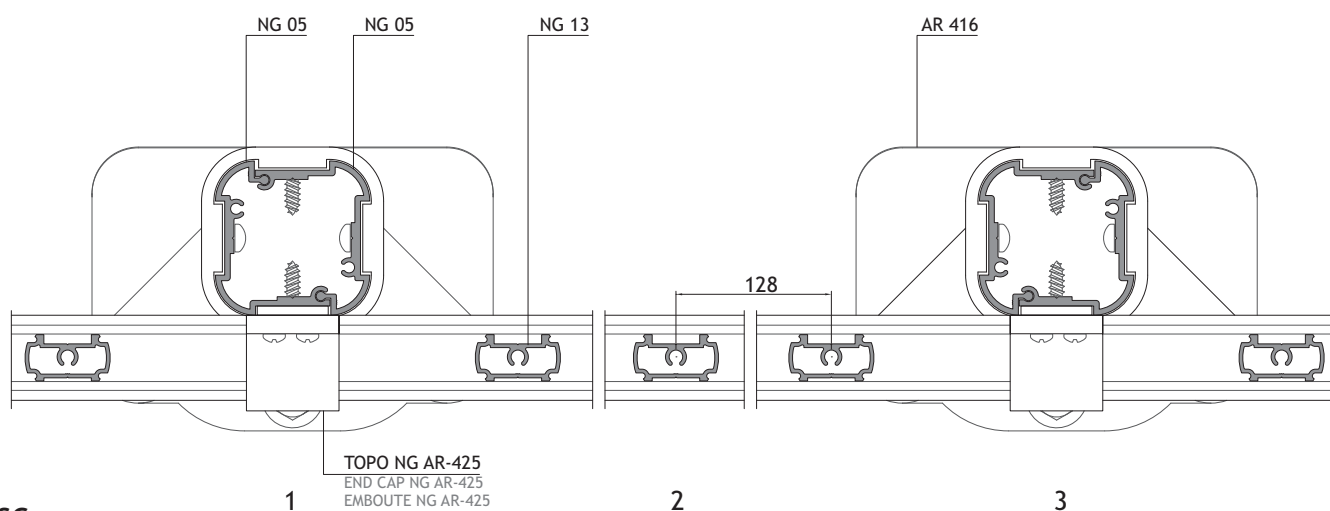
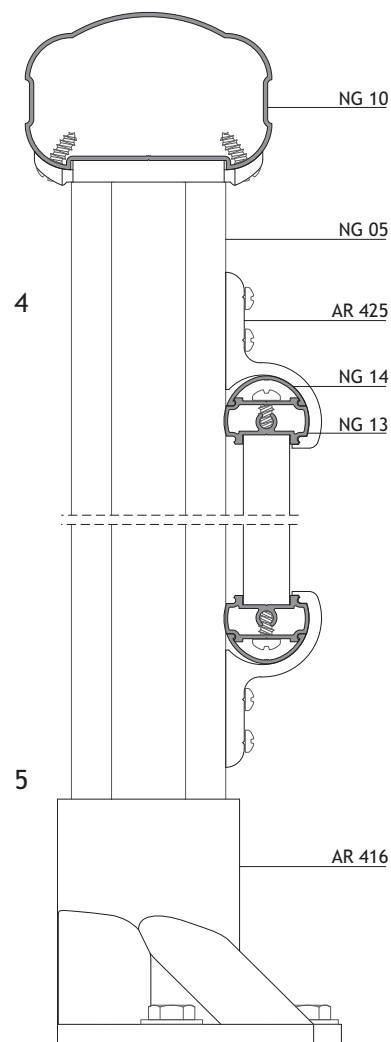


GRADEAMENTO FRONTAL AOS PRUMOS
VERTICAL RAILING IN FRONT OF COLUMNS
BARREAUDAGE FRONTAL AUX POTEAUX

NÃO PERMITE APLICAÇÃO EM TIPOLOGIAS DE ESCADA
DOES NOT ALLOW APPLICATION ON STAIRS
NE PERMET PAS APPLICATION DANS L'ESCALIERS



APLICAR O CONJUNTO TOPO NG PARA REMATE DOS PERFIS NG 13 e NG 14
APPLY END-CAP SET ON PROFILES NG13 and NG 14
APPLIQUER EMBOUTS DANS LE PROFILS NG 13 et NG 14

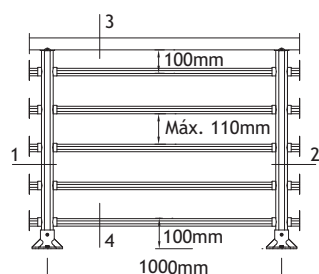


S/ESC.

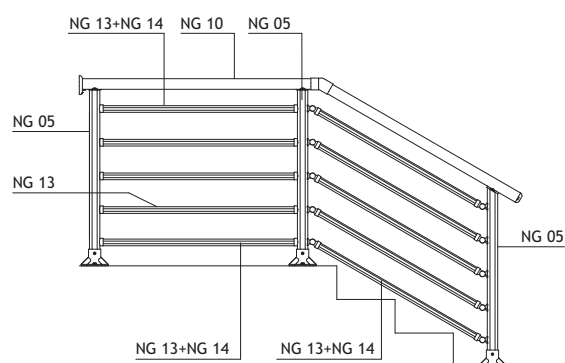
GUARDA-CORPOS COM GRADEAMENTO NA HORIZONTAL

HORIZONTAL RAILING

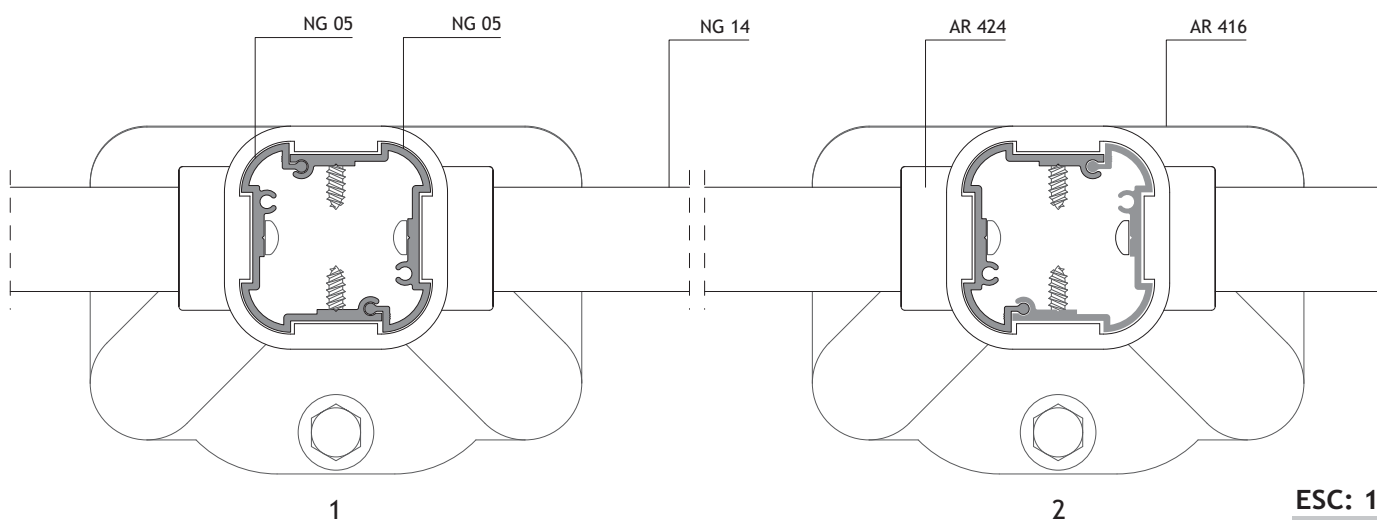
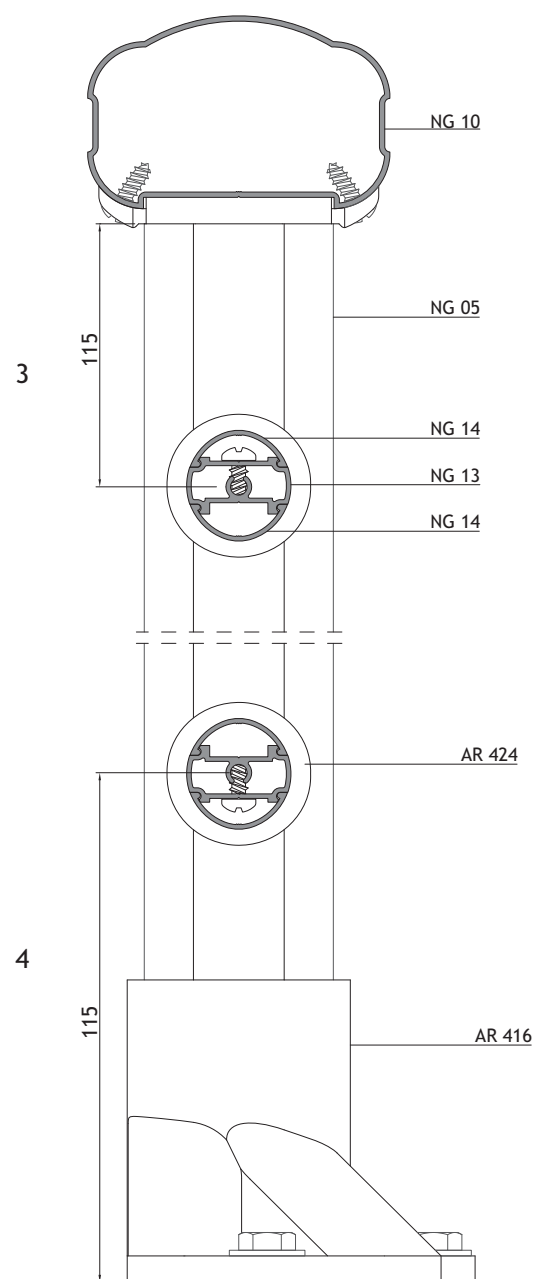
GARD-CORPS AVEC BARREAUDAGE HORIZONTAL



GRADEAMENTO HORIZONTAL
HORIZONTAL RAILING
BARREAUDAGE HORIZONTALE



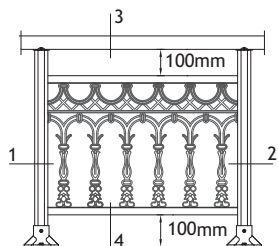
PERMITE APLICAÇÃO EM TIPOLOGIAS DE ESCADA
ALLOWS APPLICATION ON STAIRS
PERMET APPLICATION DANS L'ESCALIERS



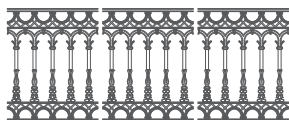
GUARDA-CORPOS COM MÓDULOS DECORATIVOS

RAILING WITH DECORATIVE MODULES

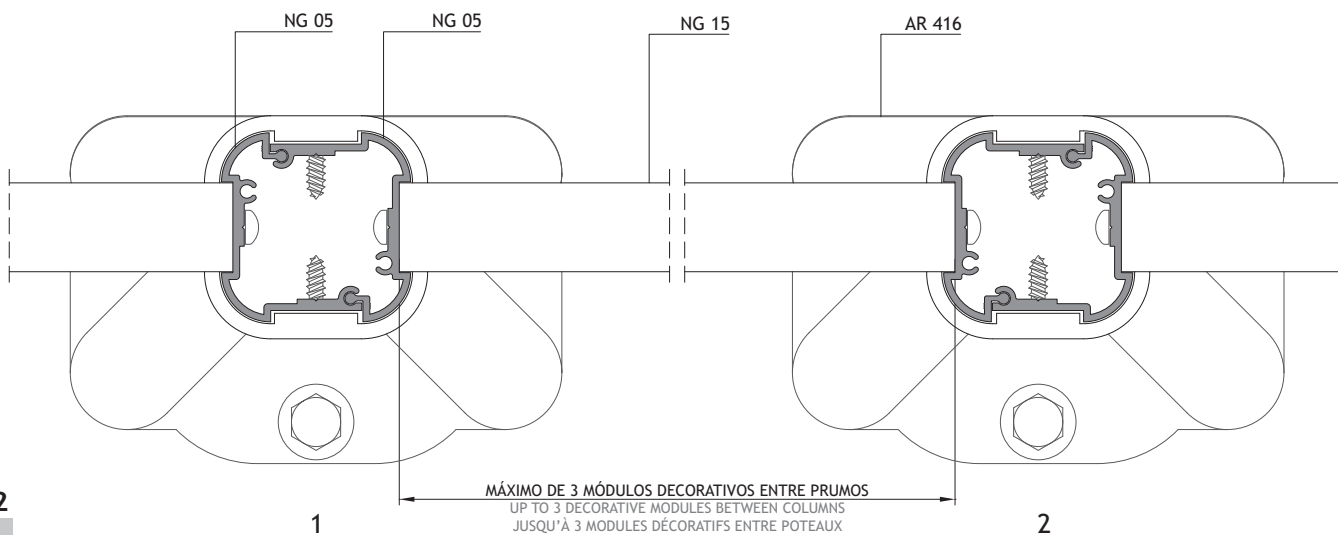
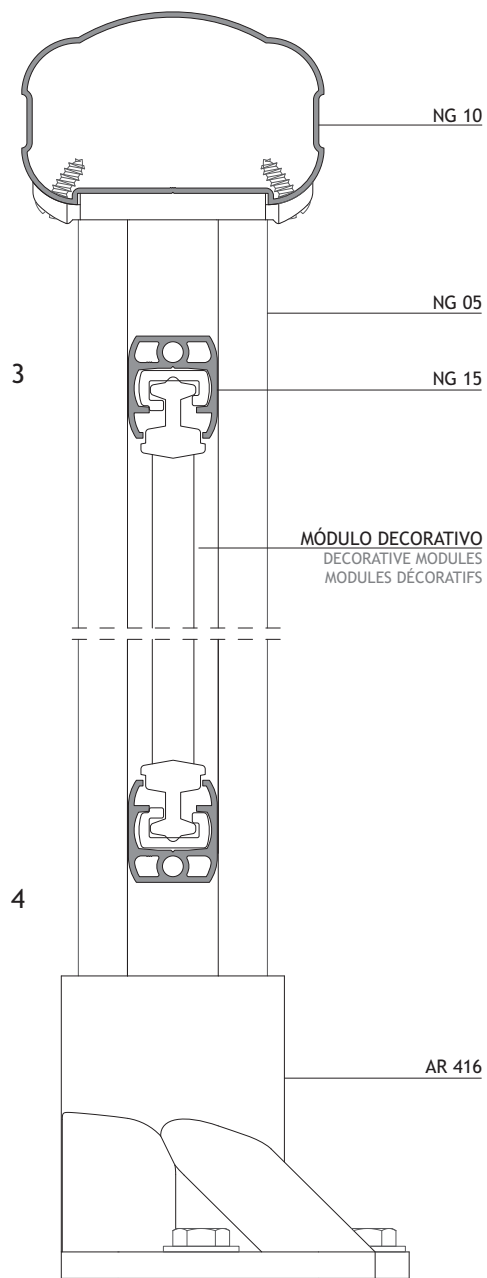
GARD-CORPS AVEC MODULES DÉCORATIFS



NÃO PERMITE APLICAÇÃO EM TIPOLOGIAS DE ESCADA
DOES NOT ALLOW APPLICATION ON STAIRS
NE PERMET PAS APPLICATION DANS L'ESCALIERS



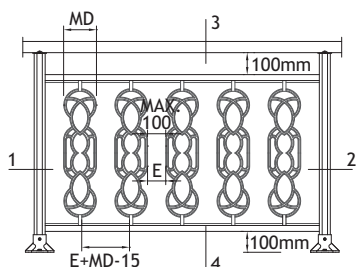
MÁXIMO DE 3 MÓDULOS DECORATIVOS ENTRE PRUMOS
UNTILL 3 DECORATIVE MODULES BETWEEN COLUMNS
JUSQU'À 3 MODULES DÉCORATIFS ENTRE POTEAUX



GUARDA-CORPOS COM ELEMENTOS DECORATIVOS

RAILING WITH DECORATIVE ELEMENTS

GARD-CORPS AVEC ÉLÉMENTS DÉCORATIFS



PERMITE APLICAÇÃO EM TIPOLOGIAS DE ESCADA

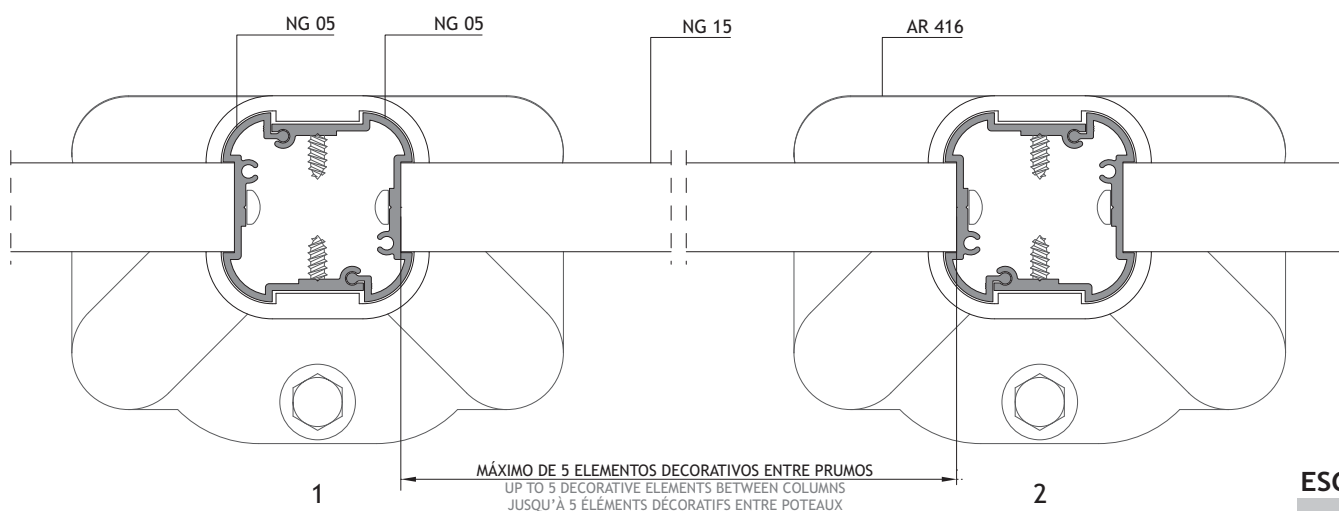
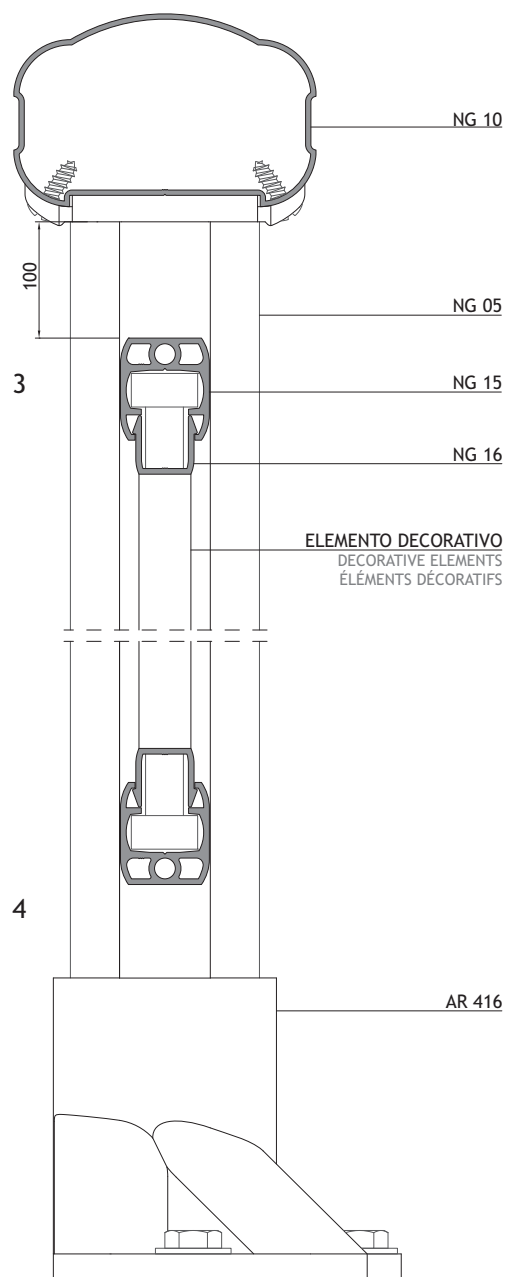
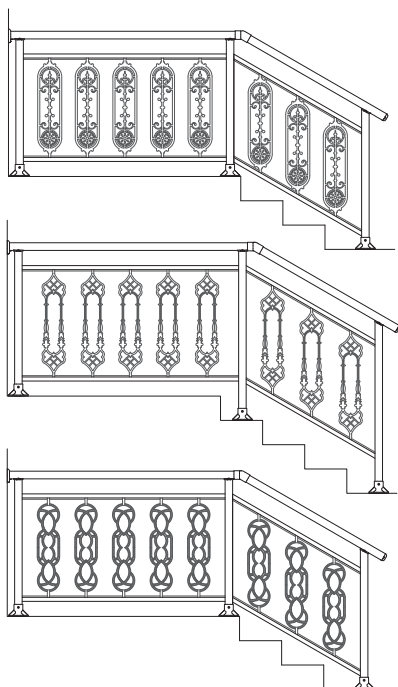
ALLOWS APPLICATION ON STAIRS

PERMET APPLICATION DANS L'ESCALIERS

MÁXIMO DE 5 ELEMENTOS DECORATIVOS ENTRE PRUMOS

UNTILL 5 DECORATIVE ELEMENTS BETWEEN COLUMNS

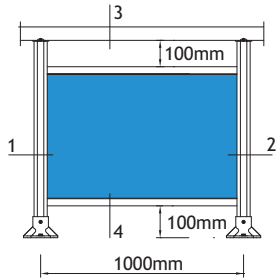
JUSQU'À 5 ÉLÉMENTS DÉCORATIFS ENTRE POTEAUX



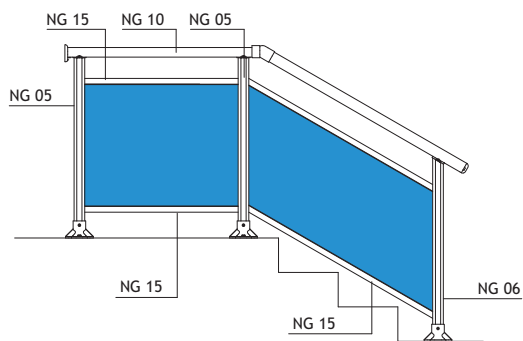
GUARDA-CORPOS COM PAINEL EM VIDRO

GLASS RAILING

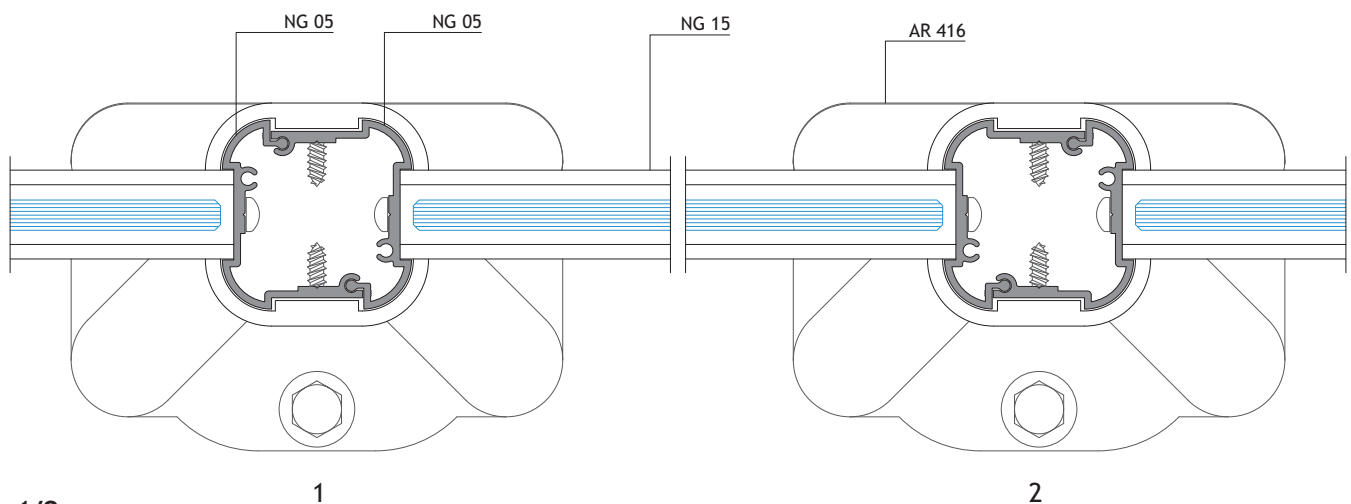
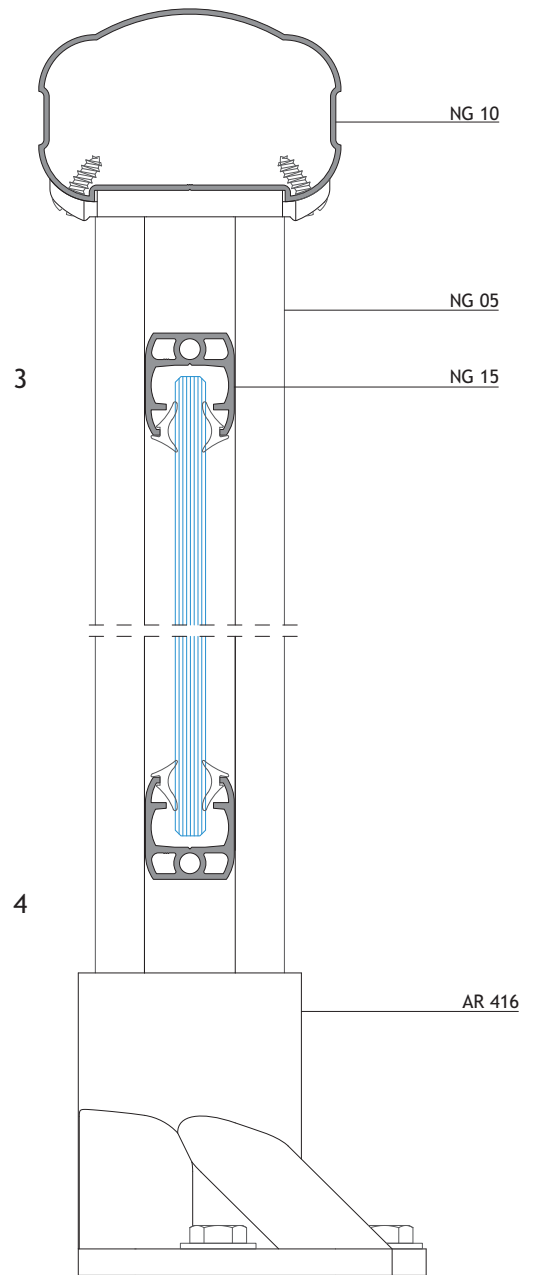
GARD-CORPS AVEC PANNEAU DE VERRE



PAINEL EM VIDRO
GLAZING PANEL
PANNEAU DE VERRE



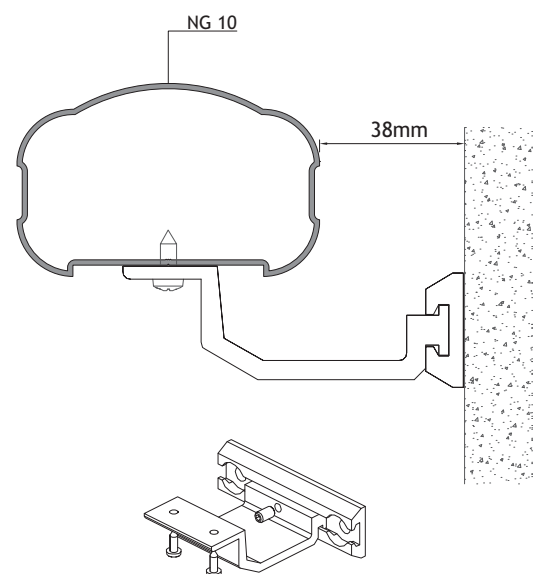
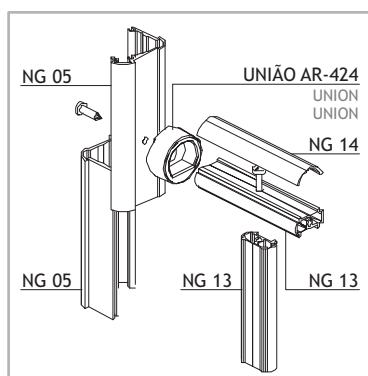
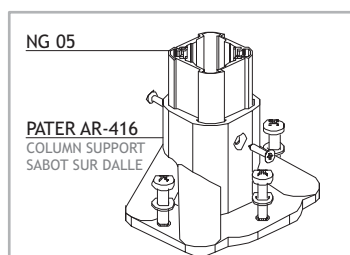
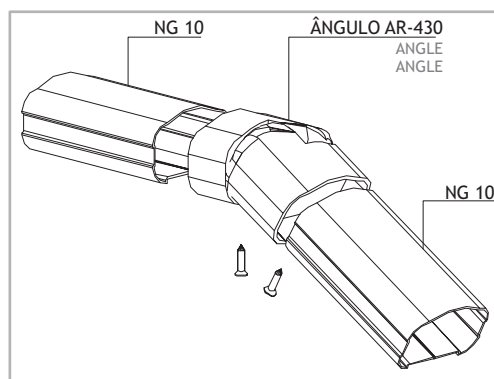
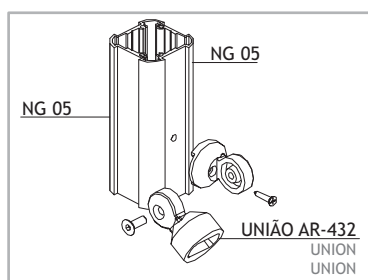
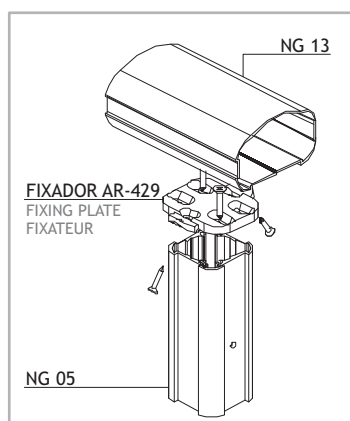
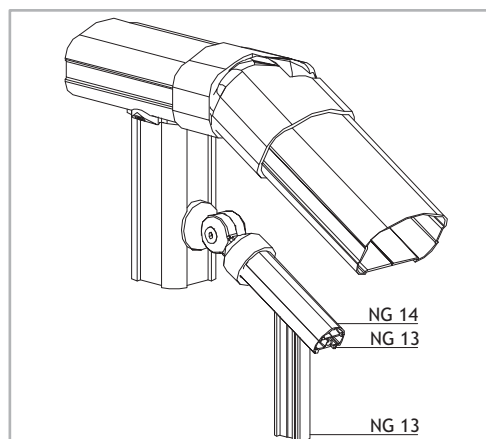
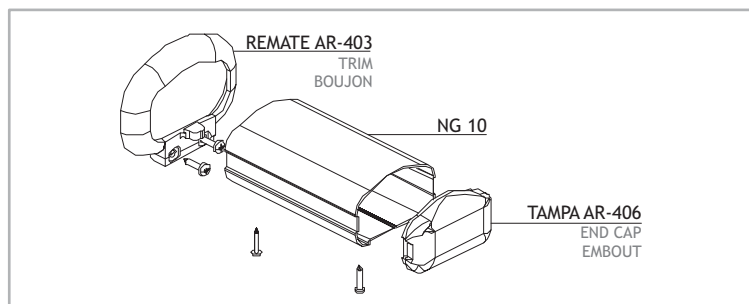
PERMITE APLICAÇÃO EM TIPOLOGIAS DE ESCADA
 ALLOWS APPLICATION ON STAIRS
 PERMÉT APPLICATION DANS L'ESCALIERS



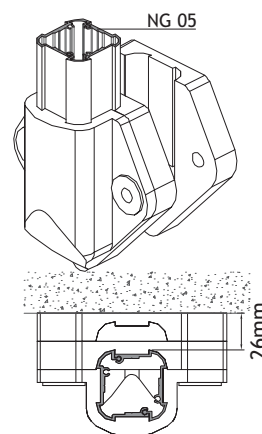
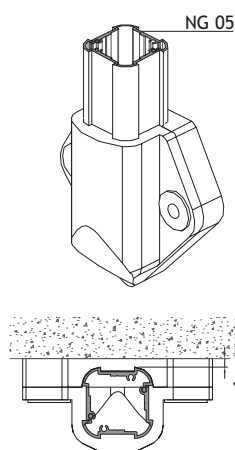
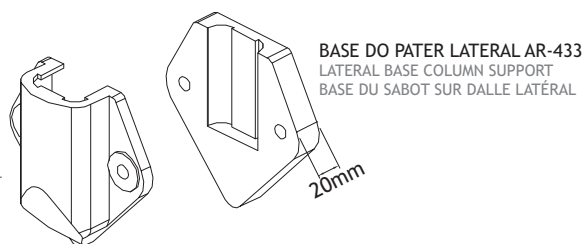
PORMENORES DE MONTAGEM

ASSEMBLY DETAILS

DÉTAILS D'ASSEMBLEMENT



PATER LATERAL AR-433
LATERAL COLUMN SUPPORT
SABOT SUR DALLE LATÉRAL



SUPOORTE DE FIXAÇÃO RA-634
HANDRAIL FIXING BRACKET RA-634
SUPPORT DE FIXATION MAIN-COURANTE RA-634

DISTÂNCIA DO NG 05 À PAREDE COM 1 BASE DO PATER
DISTANCE FROM NG 05 TO WALL WITH 1 COLUMN SUPPORT
DISTANCE DE NG 05 AU MUR AVEC 1 BASE DU SABOT SUR DALLE

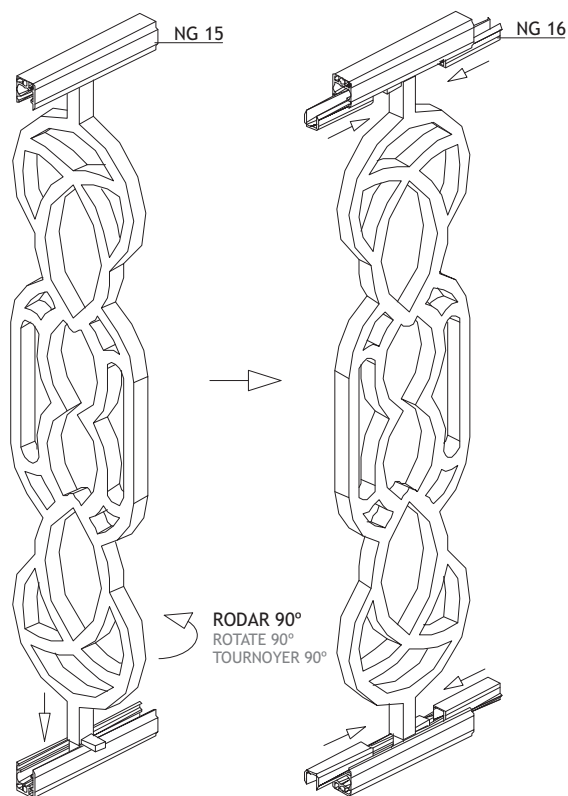
DISTÂNCIA DO NG 05 À PAREDE COM 2 BASES DO PATER
DISTANCE FROM NG 05 TO WALL WITH 2 COLUMN SUPPORTS
DISTANCE DE NG 05 AU MUR AVEC 2 BASES DU SABOT SUR DALLE

PORMENORES DE MONTAGEM

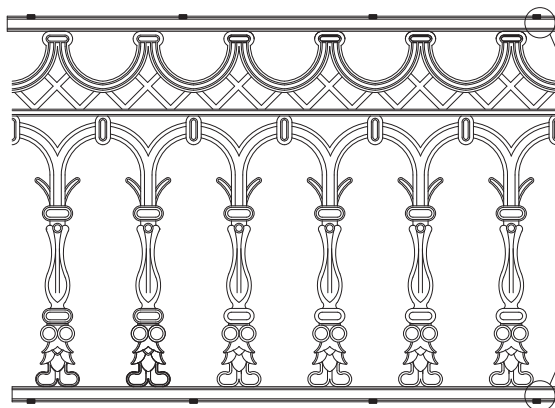
ASSEMBLY DETAILS

DÉTAILS D'ASSEMBLEMENT

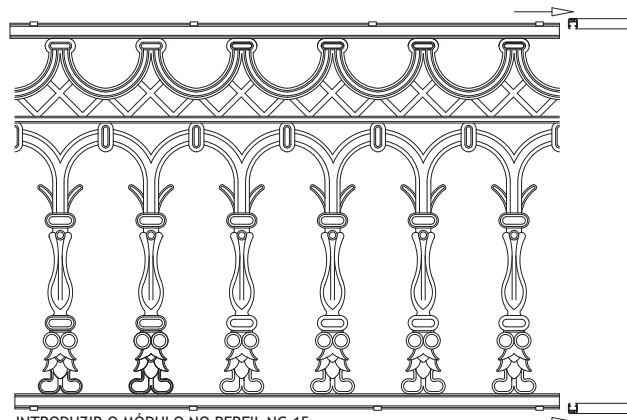
APLICAÇÃO DO ELEMENTO DECORATIVO DECORATIVE ELEMENT ASSEMBLY ASSEMBLAGE DE L'ÉLÉMENT DÉCORATIVE



APLICAÇÃO DO MÓDULO DECORATIVO DECORATIVE MODULE ASSEMBLY ASSEMBLAGE DE LE MODULE DÉCORATIVE



COLOCAR EM CADA MÓDULO DECORATIVO 4 PRESILHAS DE CADA LADO
FOR EACH DECORATIVE MODULE, PLACE 4 CLAMPS ON EACH SIDE
PLACÉ DANS CHAQUE MODULE DÉCORATIVE 4 CLAMEAUX DE CHAQUE CÔTÉ



INTRODUZIR O MÓDULO NO PERFIL NG 15
ENTER THE MODULE IN PROFILE NG 15
INTRODUIRE LE MODULE DANS LE PROFIL NG 15





SISTEMAS
EURO 2000®
PERFIS DE ALUMÍNIO E VIDROS PARA ARQUITECTURA

ALFA SUL

EN Lisboa-Sintra Km 14
2725-397 Mem Martins
T +351 219 265 090 | F +351 219 265 098
E alfa.sul@sosoares.pt

ALULIDER

Pavilhão Industrial H - Plataforma 13D
Zona Franca Industrial
9200-047 Caniçal - Madeira
T +351 291 960 494 | F +351 291 960 497
E alulider@sosoares.pt

METALFER

Travessa do Bolegão, 146
Apartado 1
3754-904 Fermentelos
T +351 234 729 740 | F +351 234 729 741
E metalfer@sosoares.pt

PERFIS OEIRAS

Rua da Colónia - Quinta da Cardosa
Apartado 214 - Abrunheira
2711-952 Sintra
T +351 219 156 660 | F +351 219 156 661
E perfis.oeiras@sosoares.pt

PORTALEX

Estrada de S. Marcos, 23
2735-521 Cacém
T +351 210 412 500 | F +351 210 412 507
E comercial@portalex.eu

SOSOARES

Rua do Campo Alegre, 474
4150-170 Porto
T +351 226 096 709 | F +351 226 005 642
E comercial@sosoares.pt



www.sosoares.pt



www.portalex.eu