



sistema de correr perimetral de 45mm

45mm perimetral sliding system

système coulissant périmétral de 45mm





## Características do Sistema

### System features

### Caractéristiques du système



O sistema de correr SP com os seus cortes de união a 45° permite um perfeito enquadramento com os sistemas de batente, por isso ideal para zonas de coexistência entre sistemas. A reduzida secção apresentada por este sistema permite a sua aplicação em espaços reduzidos. Sistema muito utilizado como segunda janela, para reforço do isolamento térmico e acústico na remodelação de edifícios.

The SP sliding system with its 45° joining cuts offers a perfect framing with the jamb systems thus ideal for areas in which both systems coexist. The reduced section offered by this system allows its use in small spaces. This system is often used as a second window, to reinforce the thermal and acoustic break in building remodelling.

Le système coulissant SP, coupé et assemblé à 45° s'encadre parfaitement avec les systèmes d'ouvrant, donc idéal pour situation de nécessaire coexistence entre les systèmes. La section réduite de ce système est idéal pour l'installer dans des espaces réduits. Il est, par exemple, très utilisé dans le cadre de rénovations pour renforcer l'isolation thermique et acoustique d'une fenêtre déjà existante en faisant office de double fenêtre.

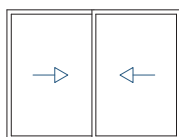
|                      |   |
|----------------------|---|
| <b>Apresentação:</b> | <b>Reta</b>   |
| Presentation         | Straight  |
| Présentation         | Droite  |
| <b>Dimensões:</b>    | <b>Aros Fixos: 2-rail: 45mm   60 mm</b>   |
| Dimensions           | Fixed frames  |
| Dimension            | Cadres dormants   |
|                      | <b>Aro Móvel: 26mm</b>  |
|                      | Mobile frame  |
|                      | Cadre ouvrant   |
| <b>Enchimento:</b>   | <b>De 6 a 17mm</b>  |
| Filling              | From 6 to 17mm  |
| Remplissage          | De 6 à 17mm   |
| <b>Envidraçado:</b>  | <b>Direto para vidro duplo</b>  |
|                      | <b>Redutor clipado para espessura de vidro inferior a 8mm</b>                       |
| Glass                | Direct for double glazing   |
|                      | Clipped reducer for glass thickness inferior to 8mm                                 |
| Vitrage              | Direct pour double vitrage  |
|                      | Clip d'adaptation pour les verres dont l'épaisseur est inférieure à 8mm             |
| <b>Cortes:</b>       | <b>45°   90°</b>  |
| Cuts                 |   |
| Coupes               |   |
| <b>Deslizamento:</b> | <b>Carrinhos simples ou duplos com rolamentos de agulhas sobre perfil postiço</b>   |
| Sliding              | Simple or double needle rolling bearings on fake profile                            |
| Glissière            | Rails simples ou doubles avec roulements d'aiguilles sur le profile de recouvrement |
| <b>Vedação:</b>      | <b>Dupla pelúcia STOP FIN</b>   |
| Insulation           | Double STOP FIN plush   |
| Étanchéité           | Joint brosse double STOP FIN  |
| <b>União:</b>        | <b>Esquadros de bloqueio de 11mm e 16mm</b>   |
| Joint                | 11mm and 16mm blocking brackets   |
| Union                | Équerres de verrouillage de 11mm et 16mm  |
| <b>Peso máximo:</b>  | <b>95 Kg/folha</b>  |
| Maximum weight       | 95 Kg/leaf  |
| Poids maximale       | 95Kg/vantail  |
| <b>Acabamentos:</b>  | <b>Lacados   Anodizados</b>   |
| Finishes             | Powder coating   Anodizing  |
| Finitions            | Laqué   Anodisé   |



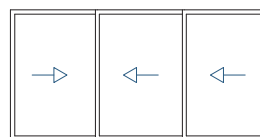
Licença nº. 1406 - Metalfar  
Licença nº. 1411 - Alfa Sul



Licença nº. 809

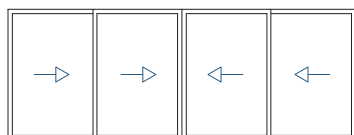


2 Rail

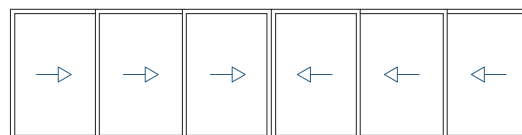


2 Rail

3 Rail



2 Rail



3 Rail

## Desempenho do sistema

System performance

Performance du système

## Marcação CE

CE Marking

Marquage CE

NP EN 14351-1

Janela 2 folhas com 2.00x2.25m

Vidro : 4 + 10 + 6

2 leaves window 2.00 x 2.25m

Glass: 4 + 10 + 6

Fenêtre 2 vantaux 2.00m x 2.25m

Verre: 4 + 10 + 6

## Permeabilidade ao AR

AIR Permeability

Perméabilité à l'AIR

**3**

## Estanquidade à ÁGUA

WATER Tightness

Étanchéité à l'EAU

**7A**

## Resistência ao VENTO

WIND Resistance

Résistance au VENT

**B2**

## Coef. Transm. TÉRMICA

THERMAL Transmittance

Coef. de Transmission THERMIQUE

**Uw = 3,57 W/m² K**

Ug = 1,9W/m² K (Janela 2 folhas com 2.20x2.40m)

Ug = 1,9W/m²K (2 leaves window with 2.20x2.40m)

Ug = 1,9W/m²K (Fenêtre de 2 vantaux avec 2.2x2.40m)

## Isolamento ACÚSTICO

ACOUSTIC Insulation

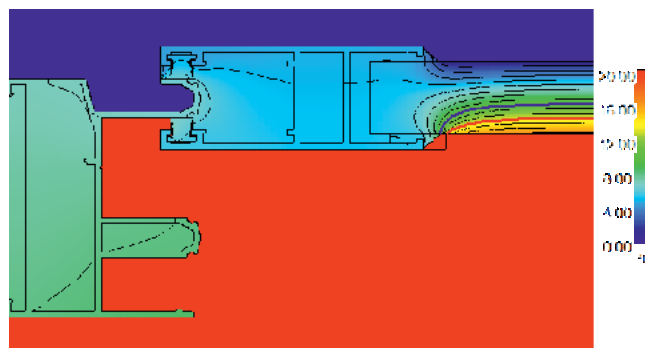
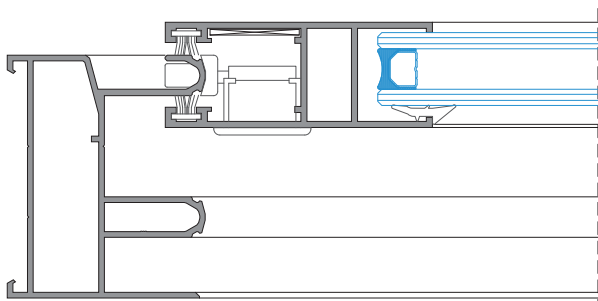
Isolation ACOUSTIQUE

**Rw(dB)= 30dB**

Rw (IGU) = 36dB, área ≤ 2,70m²

Rw (IGU) = 36dB, area ≤ 2,70m²

Rw (IGU)=36dB, aire ≤ 2,70m²



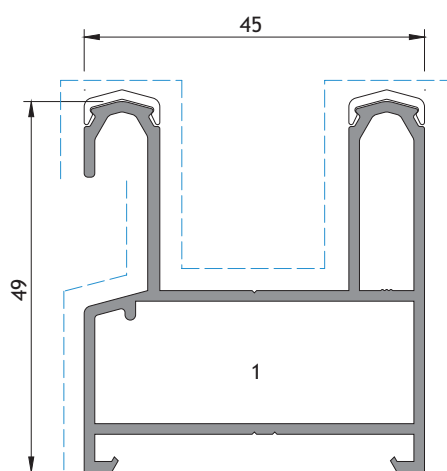




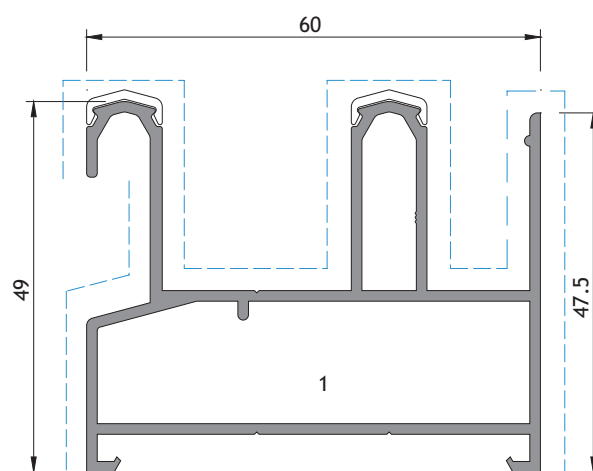
## Listagem de perfis

Profiles list

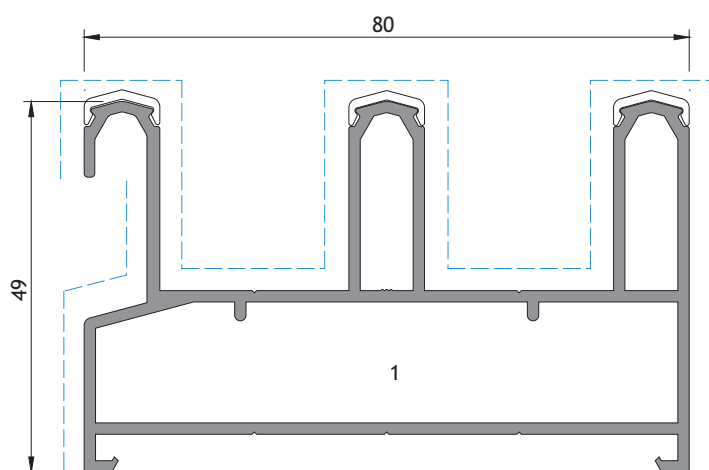
Liste des profils



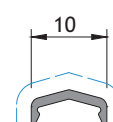
SP 01



SP 02



SP 72

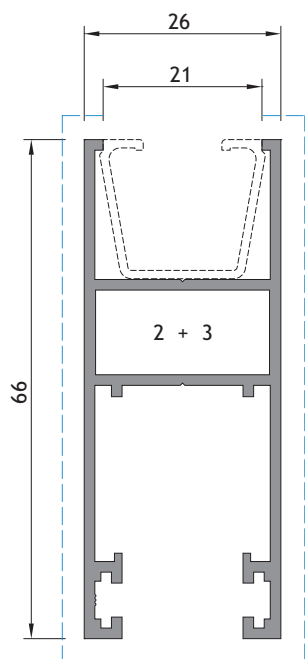


SP 91

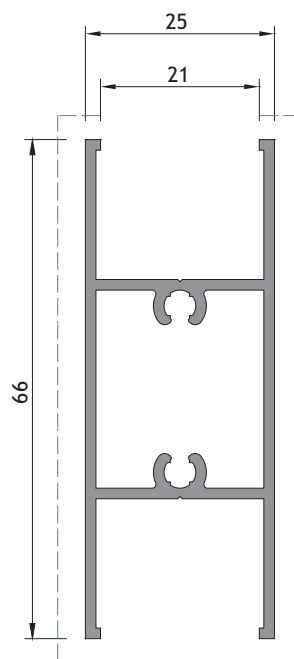
PERFIL ACETINADO NATURAL ou PRETO  
APLICAR EM PERFIS LACADOS

PROFILE NATURAL SATIN FINISH or BLACK  
TO APPLY ON LACQUERED PROFILES

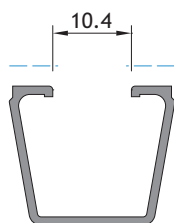
PROFIL SATINÉ NATUREL ou NOIR  
S'APPLIQUE AUX PROFILS LAQUÉES



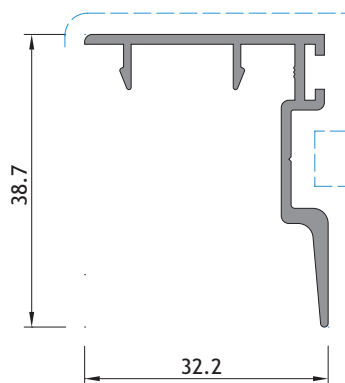
PD 17



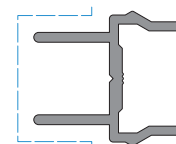
PD 29



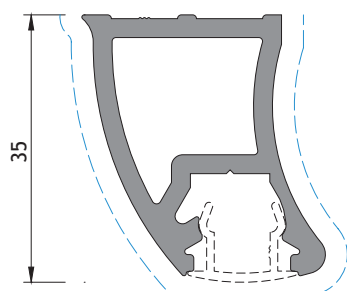
SP 24



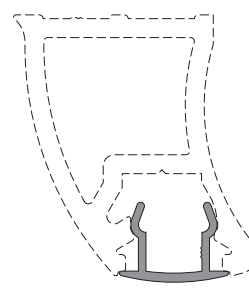
SP 14



JM 27

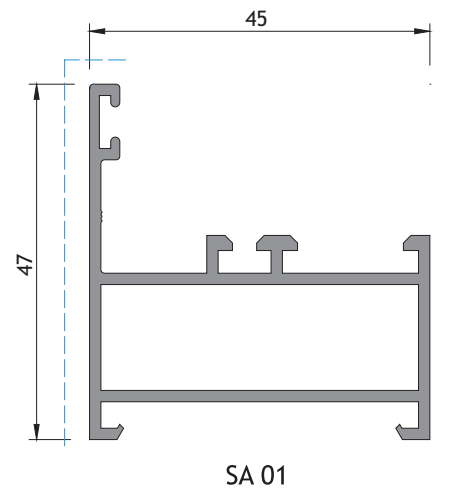
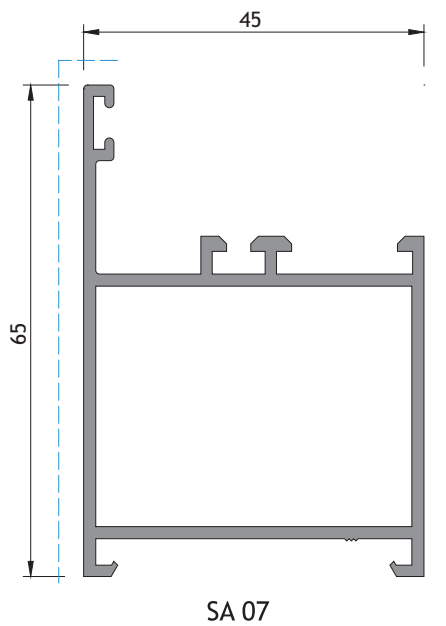
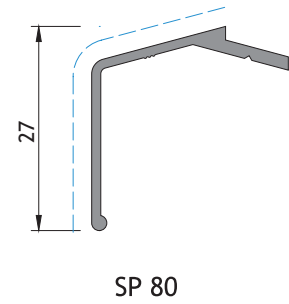
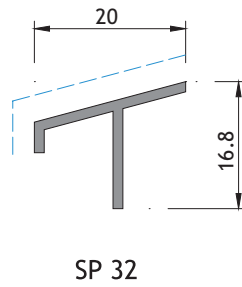
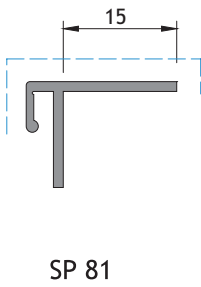
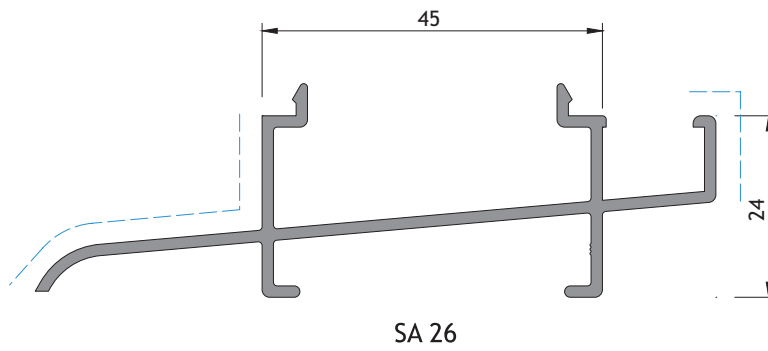
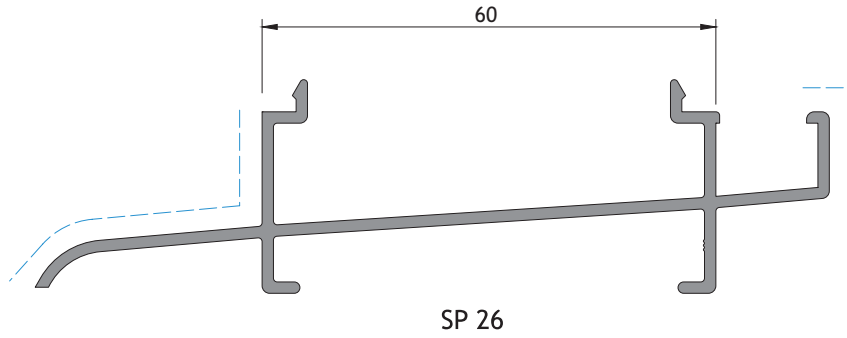


TL 25

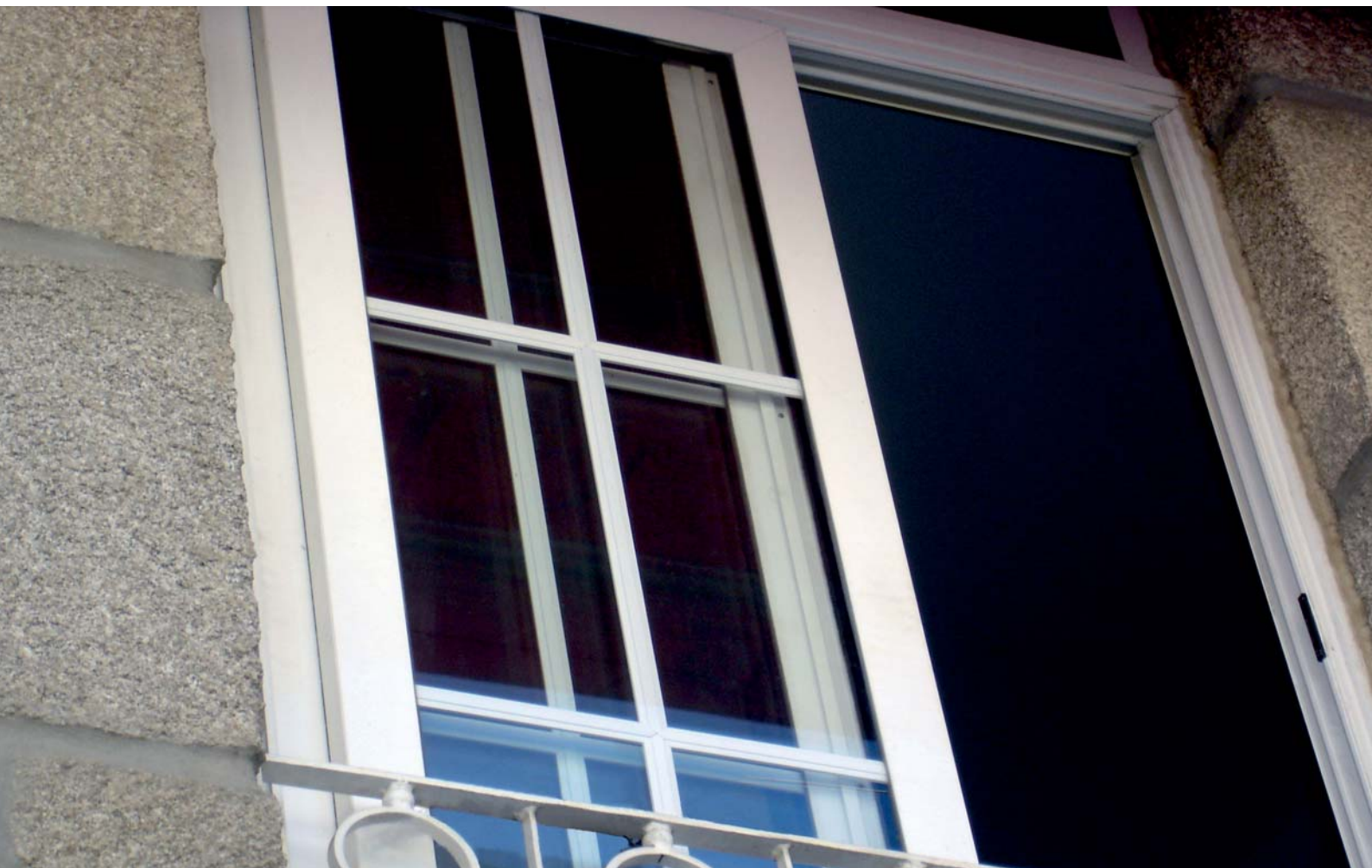


TL 26









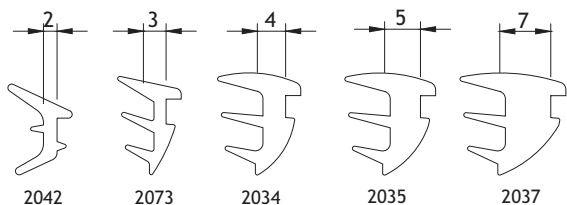
## **Acessórios**

Accessories

Accessoires







Material: EPDM  
(Rolo: 200m)

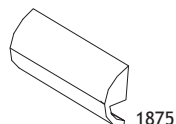
208191 JUNTA DE CUNHA 2042

208195 JUNTA DE CUNHA 2034

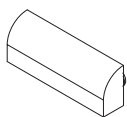
208196 JUNTA DE CUNHA 2035

208904 JUNTA DE CUNHA 2037

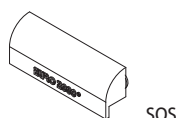
208199 JUNTA DE CUNHA 2073



1875



1875.1.x  
1875.1.74 - Preto  
1875.1.78 - Branco



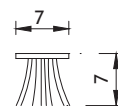
SOS

210154 GOTEIRA 1875 Br/Pr

210280 GOT. SOS C/VÁLV. Br/Pr

210142 GOT C/ VÁLV 1875.1.74

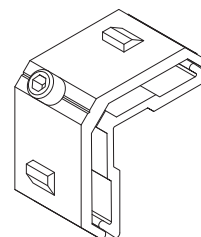
210144 GOT C/ VÁLV 1875.1.78



Material: E.P.D.M.  
(Rolo: 500m)

208460

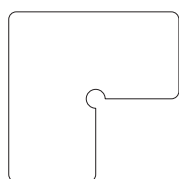
VEDANTE PELÚCIA 7x7 S-FIN



Para os perfis SP 01, SP 02 e SP 72

204454

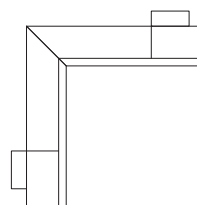
ESQUADRO SP GRANDE



Para o perfil PD 17

213252

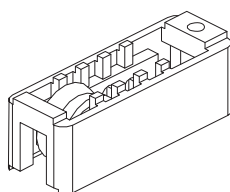
CANTO CR 2001 9201 30



Para o perfil PD 17

204427

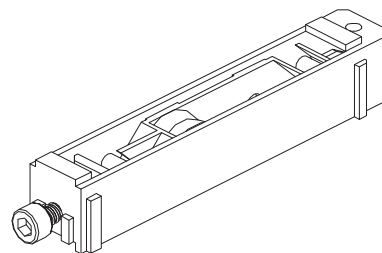
ESQUADRO SC 2500 PEQ.



Para o perfil PD 17  
Resistência por folha com 2 carrinhos: 30Kg

207264

ROLDANA SC 2500 91 20 50



Para o perfil PD 17  
Resistência por folha com 2 carrinhos: 48Kg

205152

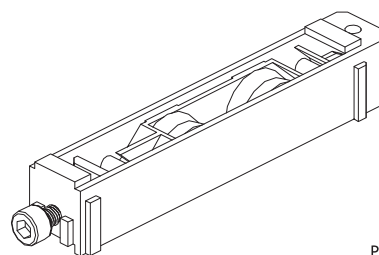
CARRINHO SP REG. ROL. AG. INOX SIMPLES



Para o perfil PD 17  
Rodízio suplementar para Carrinho SP com esferas

000000

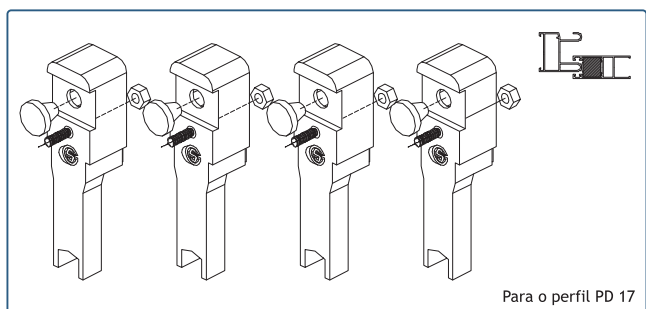
RODÍZIO SUPLEMENTAR COM ROL. ESFERAS



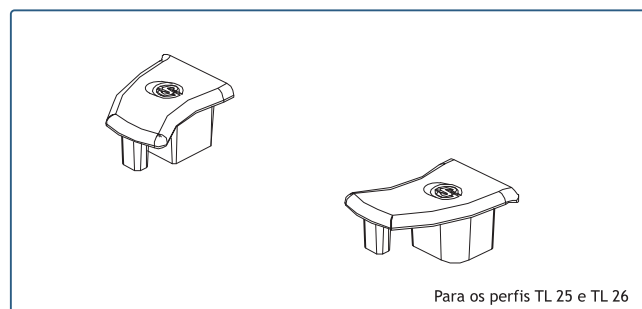
Para o perfil PD 17.  
Resistência por folha com 2 carrinhos: 96Kg

205150

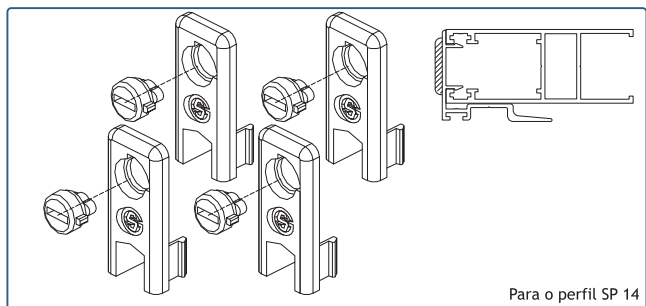
CARRINHO SP REG. ROL. AG. INOX DUPLO



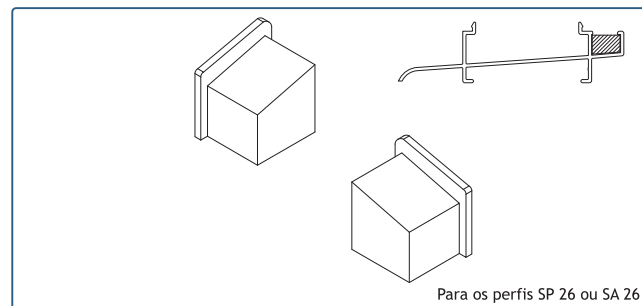
212385 CONJUNTO GUIAS AMORTECEDOR K45P



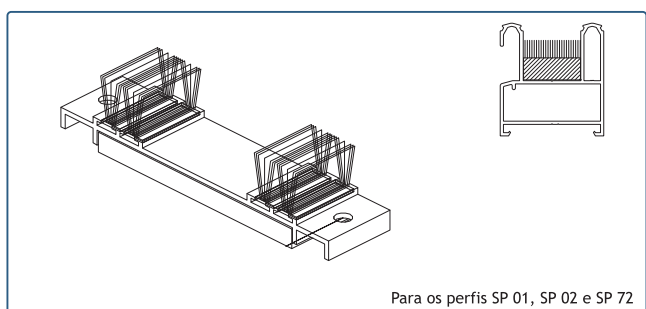
212350 CONJUNTO TOPO TL 25 PRETO



223230 KIT CORTA-VENTO K35P



212366 CONJUNTO TOPO SOL 26 Pr.



213284 CORTA-VENTO SP 912070.23



201478 FECHO LATERAL MANUAL 2070 (Lac.Br./Pr.)



201477 FECHO LATERAL AMANUAL 2060 (Lac.Br./Pr.)



201375 FECHO COM FECHADURA 2073 (Lac.Br./Pr.)



201470 FECHO LATERAL AUTOMÁTICO 2071 (Lac.Br./Pr.)



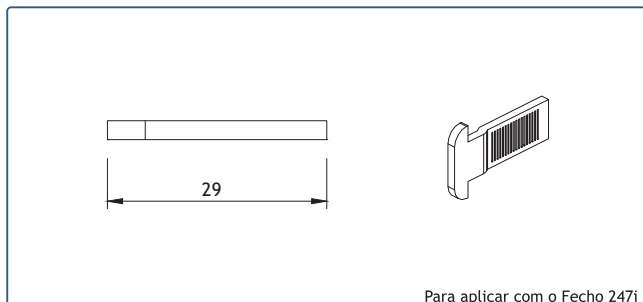
200026 ASA PARA FECHO LATERAL 2080 (Br./Pr.)



201475 FECHO LATERAL JM 247i (Lac.Br./Lac. Pr./Acetinado Natural)



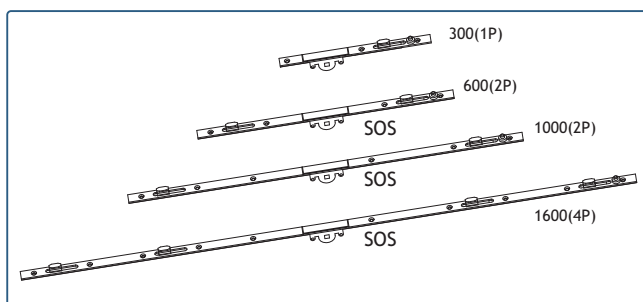
000000 GANCHO-FECHO 2050/711



204709 GANCHO SP



204712 GANCHO FECHO 2070/833



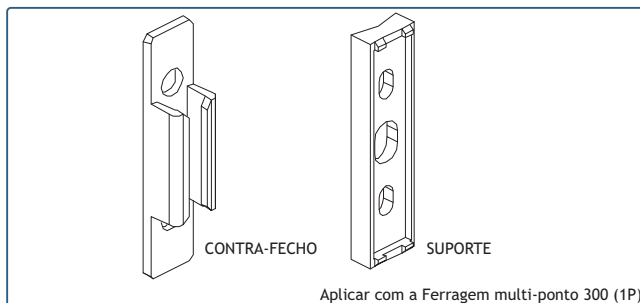
211205 FERRAGEM MULTI-PONTO 300 (1P)  
211191 FERRAGEM MULTI-PONTO SOS 600 (2P)  
211192 FERRAGEM MULTI-PONTO SOS 1000 (2P)  
211193 FERRAGEM MULTI-PONTO SOS 1600 (4P)



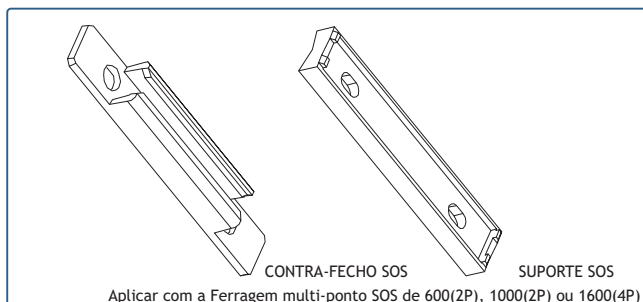
202085 CONTRA-FECHO 2070.870



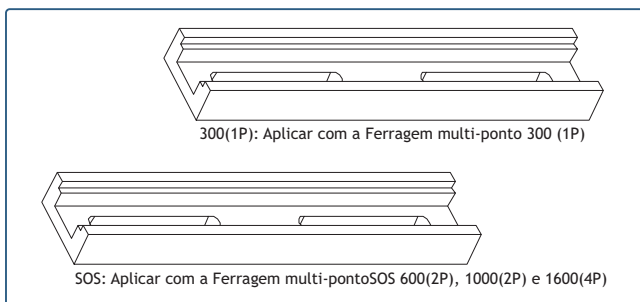
215060 PEÇA ANTI-LEVANTAMENTO MULTI-PONTO 300(1P)



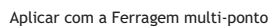
202098 CONTRA-FECHO MULTI-PONTO 300 (1P)  
230303 SUPORTE PARA CONTRA-FECHO MULTI-PONTO 300(1P)



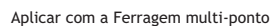
202094 CONTRA-FECHO MULTI-PONTO SOS  
230307 SUPORTE PARA CONTRA-FECHO MULTI-PONTO SOS



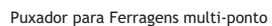
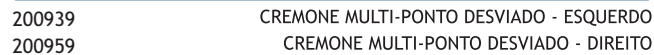
230304 SUPORTE PARA FERRAGEM MULTI-PONTO 300 (1P)  
230306 SUPORTE PARA FERRAGEM MULTI-PONTO SOS



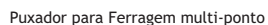
## BASE PARA FERRAGEM MULTI-PONTO



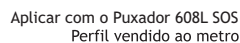
### CHAVE PARA FERRAGEM MULTI-PONTO



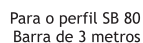
PUXADOR JANELA 20040 INOX



PUXADOR SIMPLES 608L SOS



CALCO X-00 (30mm)



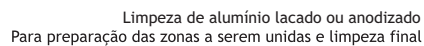
DESLIZADOR CALHA 1201



BATENTE TOPEHSN



CORTANTE SP



PRODUTO DE LIMPEZA DE ALUMÍNIO (1L) Transparente





Junta de vedação elástica, resistente aos UV  
Impede a corrosão de penetrar pelas zonas cortadas

208019

SELA JUNTAS 150gr. (Cinza)





## **Pormenores de montagem**

Assembly details  
Détails d'assemblage

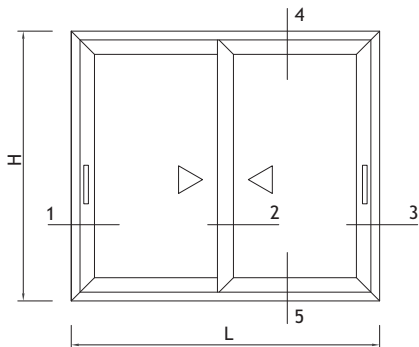




## JANELA DE CORRER DE 2 FOLHAS - COM PERFIL BI-RAIL SP 02

2 LEAVES SLIDING WINDOW - WITH 2-RAIL PROFILE SP 02

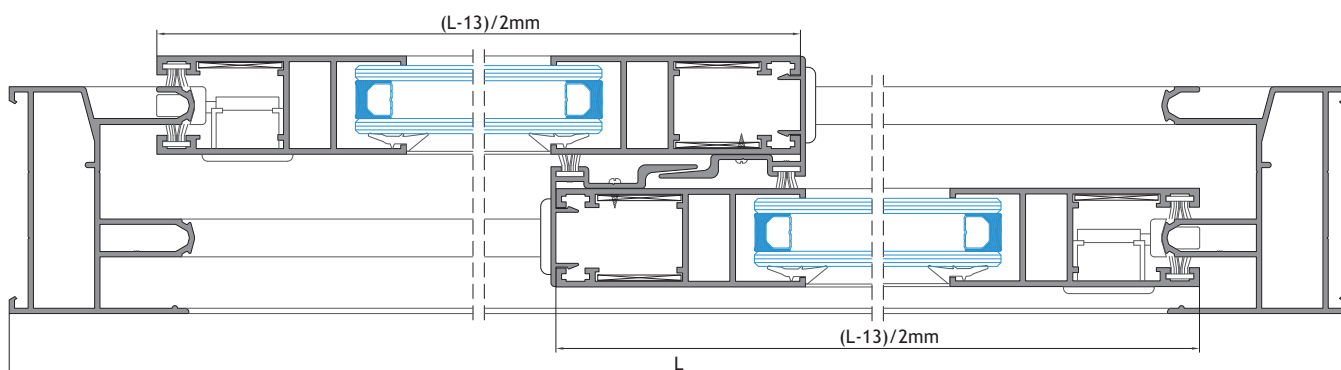
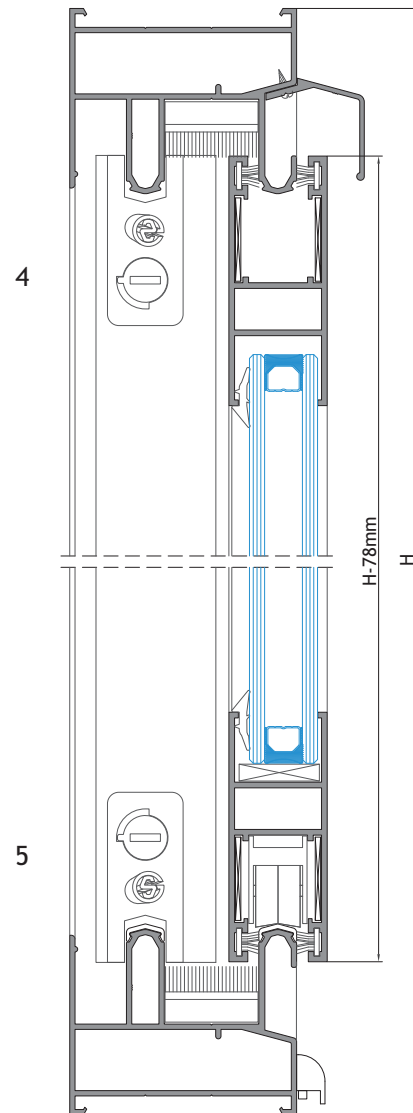
FENÊTRE COULISSANTE 2 VANTAOX - SUR PROFIL 2-RAIL SP 02



| PERFIS<br>PROFILES   PROFILS          |  |   |                                    |                       |
|---------------------------------------|--|---|------------------------------------|-----------------------|
| REFERÊNCIA<br>REFERENCE<br>REFERÉNCIA | CORTE HORIZONTAL<br>HORIZONTAL DETAIL<br>DÉTAIL HORIZONTAL | CORTE VERTICAL<br>VERTICAL DETAIL<br>DÉTAIL VERTICALE | QUANTIDADE<br>QUANTITY<br>QUANTITÉ | CORTE<br>CUT<br>COUPÉ |
| SP 02                                 | L  | H   | 2+2                                |                       |
| PD 17                                 | (L-13)/2   | H-78  | 4+4                                |                       |
| SP 14                                 | -  | H-78  | 2                                  |                       |
| SP 80                                 | L  | -   | 1                                  |                       |
| SP 91                                 | L-92   | -   | 2                                  |                       |

| ACESSÓRIOS<br>ACCESSORIES   ACCESSOIRES |   |                                   |
|---|---|-----------------------------------|
| CÓDIGO<br>CODE                          | DESIGNAÇÃO<br>DESIGNATION   DÉSIGNATION                             | QUANTIDADE<br>QUANTITY   QUANTITÉ |
| 210280                                  | GOTEIRA SOS C/VÁLVULA   DRIP   GOUTTIÈRE                            | 2                                 |
| 205152                                  | CARRINHO SP REG. ROL. AG. SI.   ROLLING BEARING   ROULEAU           | 4                                 |
| 223230                                  | KIT CORTA-VENTO K35P   WIND-CUT KIT   KIT BRISE-VENT                | 1                                 |
| 213284                                  | CORTA-VENTO SP 912070.23   WIND-CUT   BRISE-VENT                    | 2                                 |
| 212385                                  | CONJ GUIAS C/AMORT. K45P   GUIDES KIT   KIT DE GUIDES               | 1                                 |
| 202085                                  | CONTRA-FECHO 2070.870   COUNTER-LOCK BRACKET   C.-FERMETURE SUPPORT | 2                                 |
| 201470                                  | FECHO LAT. AUTOM. (P/B) 2071   LATERAL LOCK   FERMETURE LATÉRAL     | 2                                 |
| 204712                                  | GANCHO-FECHO 2070.833   LOCK-HOOK   CROCHETS                        | 2                                 |
| 204427                                  | ESQUADRO SC 2500 PEQ.   BLOCKING BRACKET   ÉQUERRE                  | 8                                 |
| 204454                                  | ESQUADRO SP GRANDE   BLOCKING BRACKET   ÉQUERRE                     | 4                                 |
| 213252                                  | CANTO CR2001 920130   ANGLE   COIN                                  | 16                                |

| VEDANTES<br>SEALANTS   JOINTS |   |                                   |
|-------------------------------|---|-----------------------------------|
| CÓDIGO<br>CODE                | DESIGNAÇÃO<br>DESIGNATION   DÉSIGNATION                 | QUANTIDADE<br>QUANTITY   QUANTITÉ |
| VARIÁVEL<br>VARIABLE          | JUNTA INTERIOR   GLAZING WEDGE GASKET   JOINT INTÉRIEUR | 2L+4H                             |
| 208460                        | PELÚCIA 7x7 5-FIN   PLUSH   JOINT BROUSSE               | 4L+6H                             |



1

2

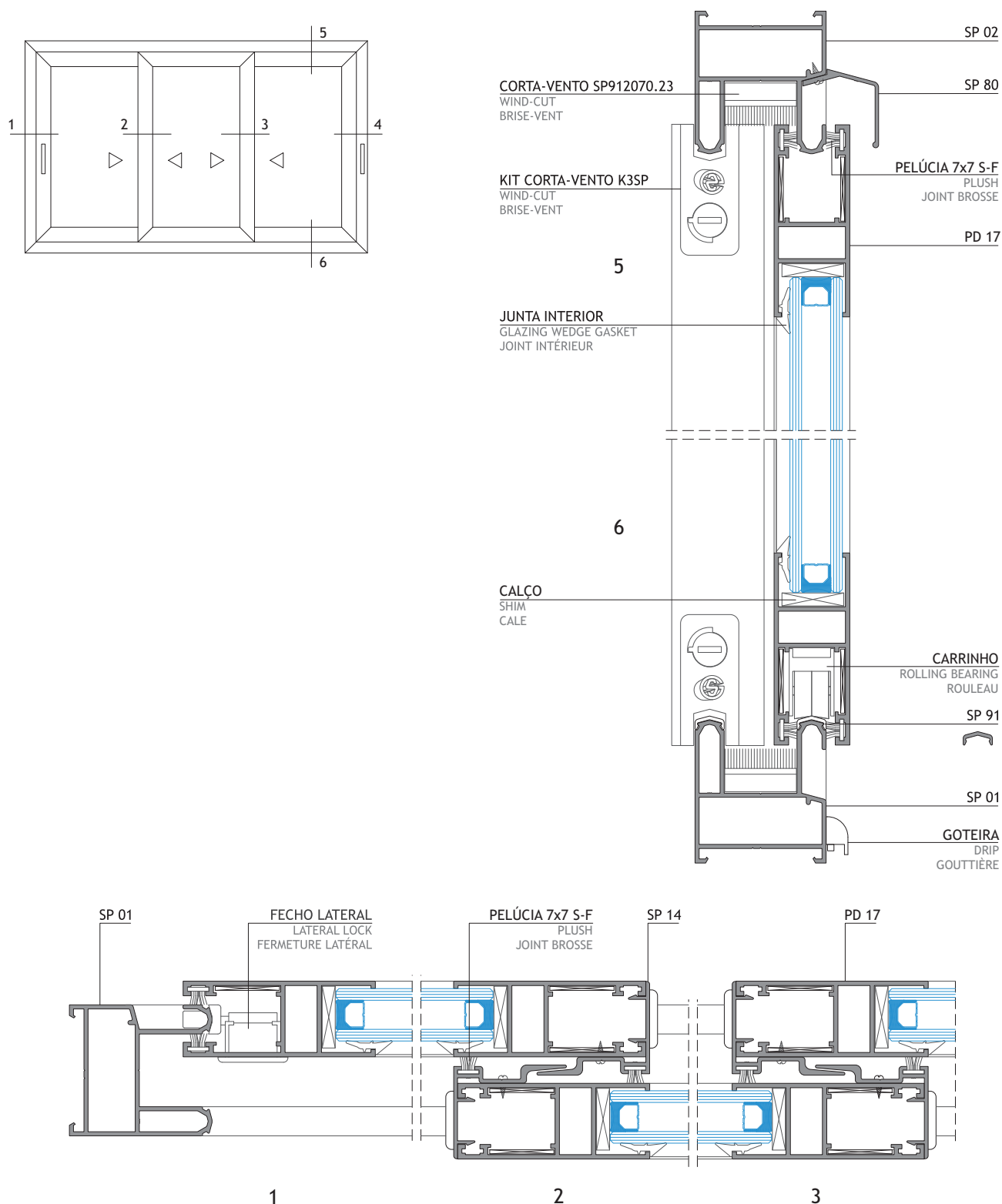
3

ESC: 1/2

## JANELA DE CORRER DE 3 FOLHAS - COM PERFIL BI-RAIL SP 01

3 LEAVES SLIDING WINDOW - WITH 2-RAIL PROFILE SP 01

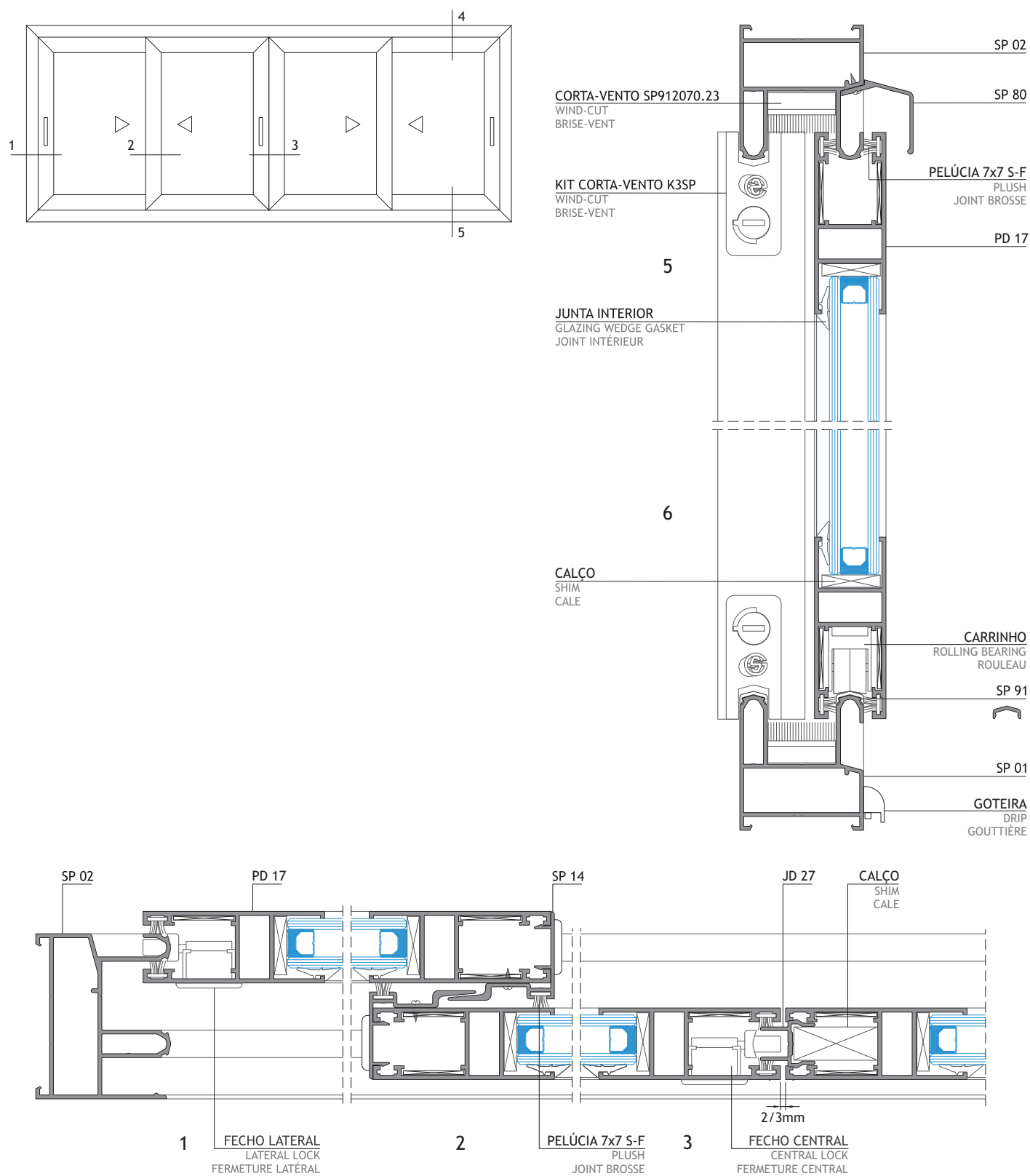
FENÊTRE COULISSANTE 3 VANTAUX - SUR PROFIL 2-RAIL SP 01



## JANELA DE CORRER DE 4 FOLHAS - COM PERFIL BI-RAIL SP 02

4 LEAVES SLIDING WINDOW - WITH 2-RAIL PROFILE SP 02

FENÊTRE COULISSANTE 4 VANTAUX - SUR PROFIL 2-RAIL SP 02

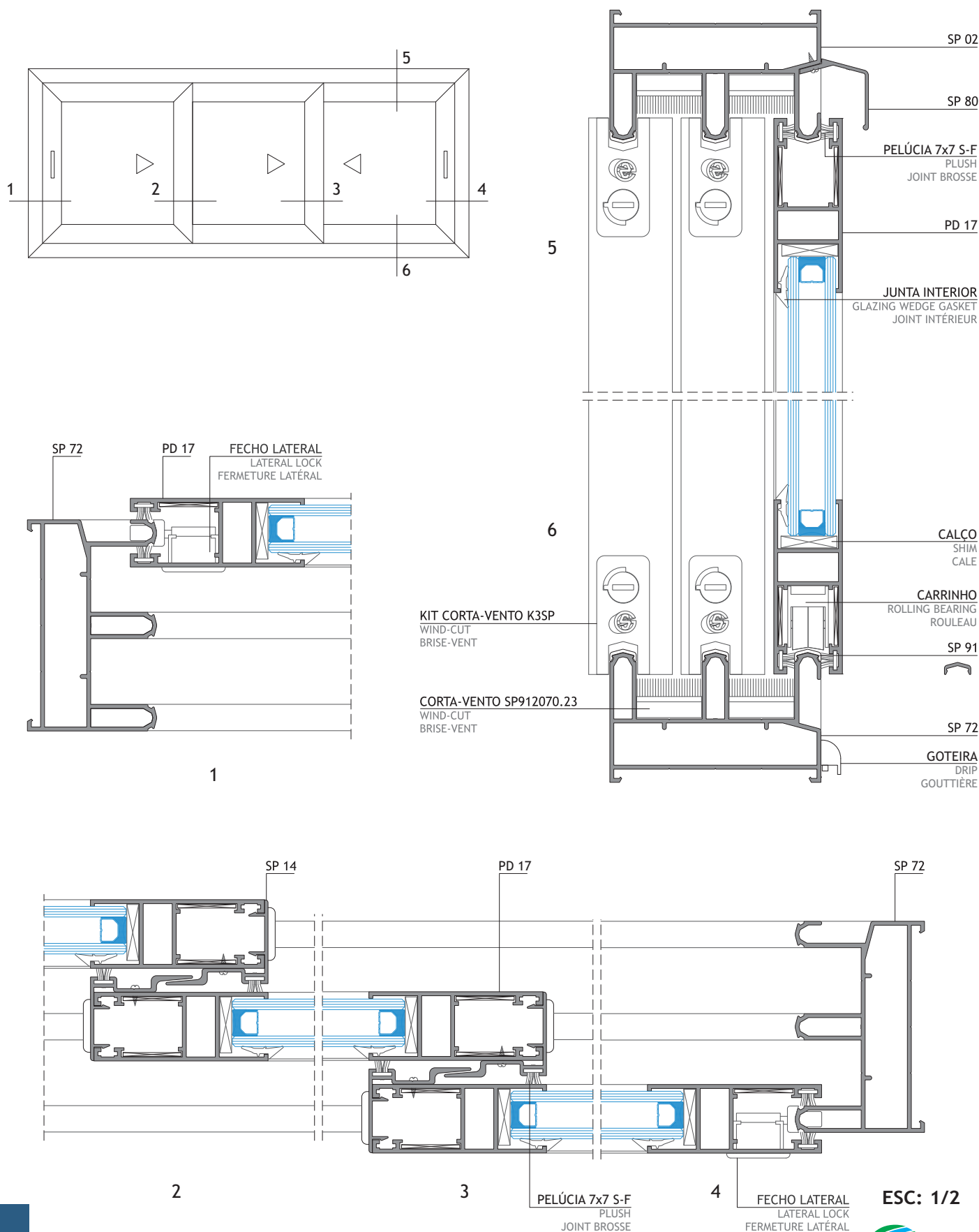


ESC: 1/2

# JANELA DE CORRER DE 3 FOLHAS - COM PERFIL TRI-RAIL

3 LEAVES SLIDING WINDOW - WITH 3-RAIL PROFILE

FENÊTRE COULISSANTE 3 VANTAOX - SUR PROFIL 3-RAIL

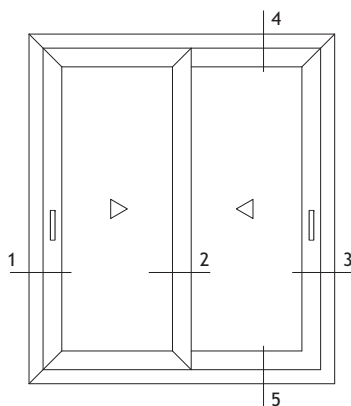




## PORTA DE CORRER DE 2 FOLHAS - COM PERFIL DE REFORÇO TL 25

2 LEAVES SLIDING DOOR - WITH WITH REINFORCEMENT PROFILE TL 25

PORTE COULISSANTE 2 VANTAUX - AVEC PROFIL DE RENFORCEMENT TL 25



CONSULTAR DEPARTAMENTO TÉCNICO PARA VERIFICAÇÃO DA RESISTÊNCIA PARA DEFINIR A QUANTIDADE DE PERFIS DE REFORÇO A UTILIZAR.

TO DEFINE THE REINFORCEMENT PROFILES QUANTITIES, CONTACT THE TECHNICAL DEPARTMENT FOR RESISTANCE VERIFICATION.

CONSULTER LE DÉPARTEMENT TECHNIQUE POUR FAIRE LA VERIFICATION DE LA RÉSISTANCE POUR DÉFINIR LA QUANTITÉ DE PROFILS DE RENFORCE À UTILISÉ

CORTA-VENTO SP912070.23  
WIND-CUT  
BRISE-VENT

KIT CORTA-VENTO K3SP  
WIND-CUT  
BRISE-VENT

JUNTA INTERIOR  
GLAZING WEDGE GASKET  
JOINT INTÉRIEUR

CALÇO  
SHIM  
CALE

PELÚCIA 7x7 S-F  
PLUSH  
JOINT BROUSSE

SP 02

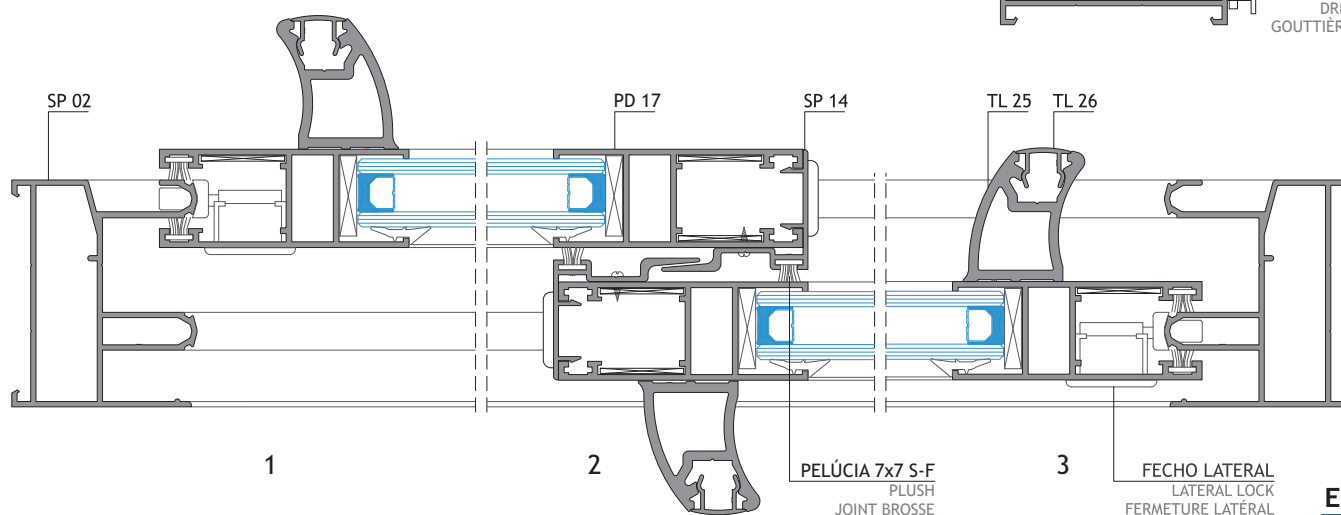
SP 80

PD 17

SP 91

SP 02

GOTEIRA  
DRIP  
GOUTTIÈRE



ESC: 1/2

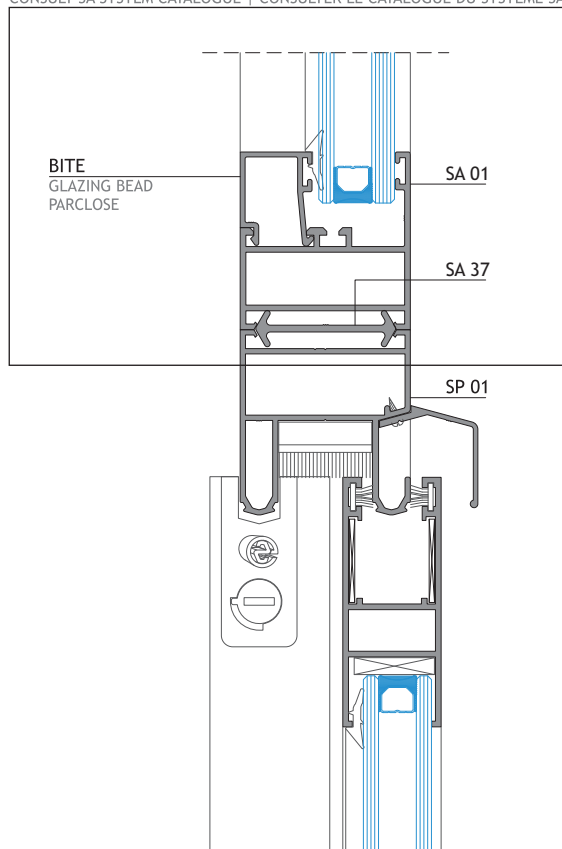
## PORMENORES DE REMATE

TRIM PROFILE DETAILS

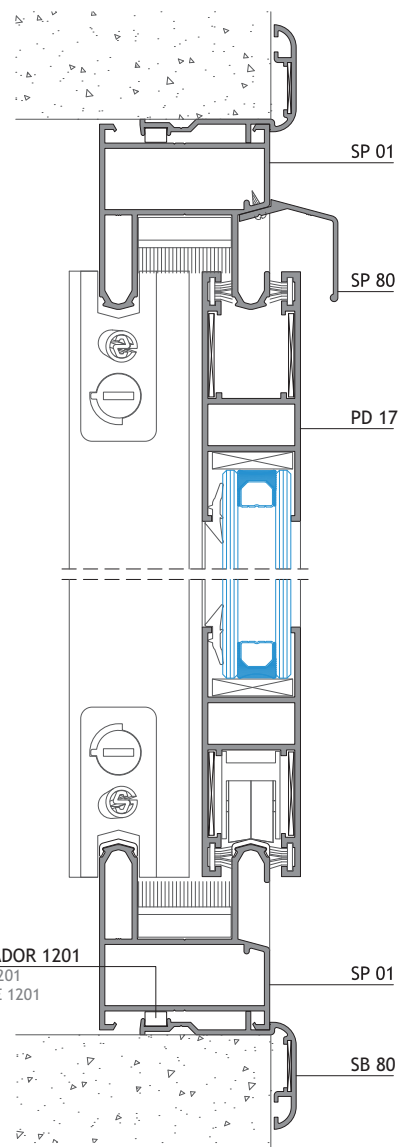
DÉTAIL DE COUVRE-JOINT

CONSULTAR CATÁLOGO DO SISTEMA SA

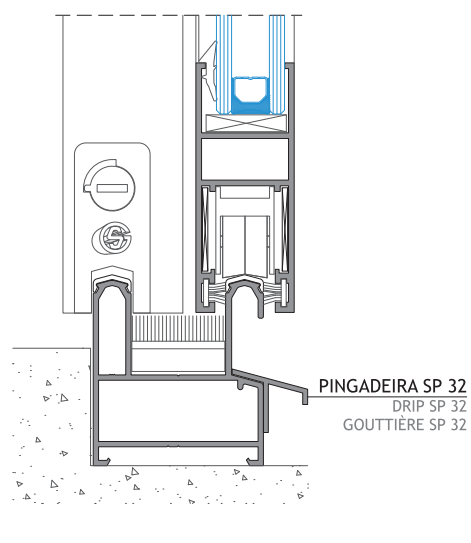
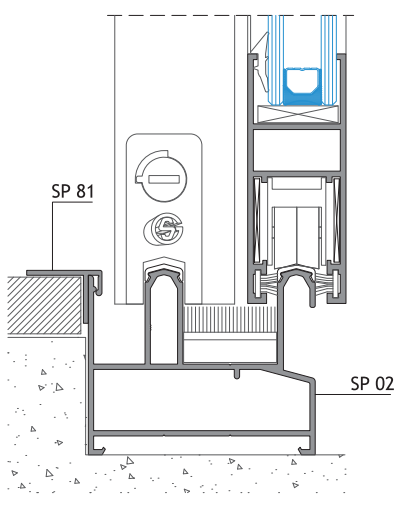
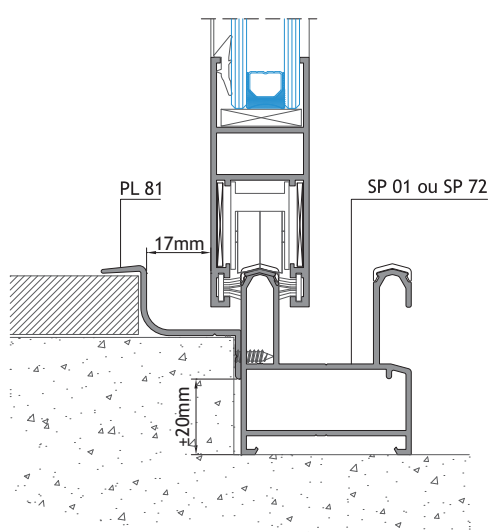
CONSULT SA SYSTEM CATALOGUE | CONSULTER LE CATALOGUE DU SYSTÈME SA

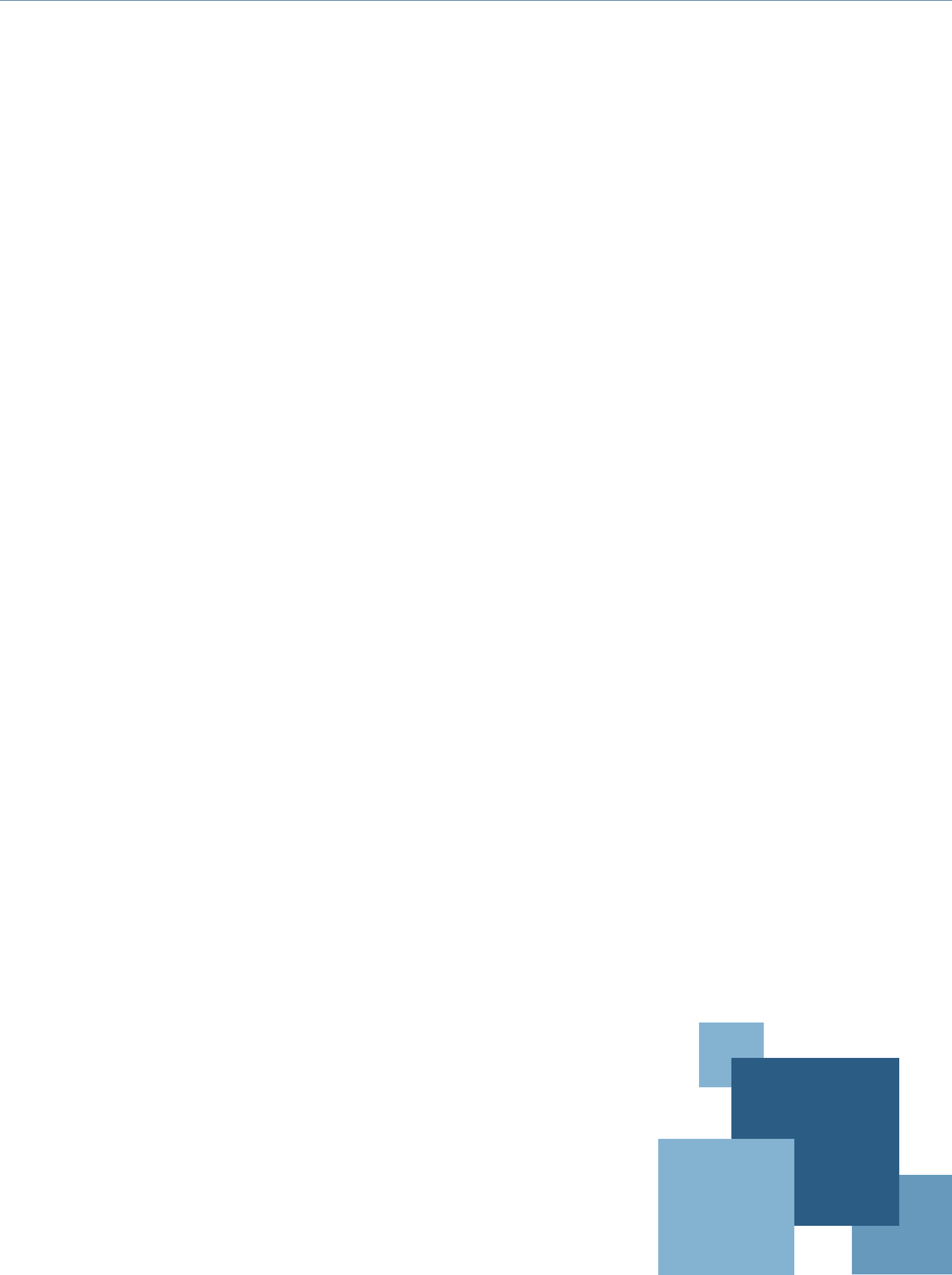


LIGAÇÃO AO SISTEMA SA COM O PERFIL SP 01  
SA SYSTEM CONNECTION WITH PROFILE SP 01  
CONNEXION AU SYSTÈME SA SUR PROFIL SP 01



COM O PERFIL SB 80  
WITH PROFILE SB 80  
AVEC PROFIL SB 80







**SISTEMAS**  
**EURO 2000**®  
PERFIS DE ALUMÍNIO E VIDROS PARA ARQUITECTURA

### ALFA SUL

EN Lisboa-Sintra Km 14  
2725-397 Mem Martins  
T +351 219 265 090 | F +351 219 265 098  
E alfa.sul@sosoares.pt

### ALULIDER

Pavilhão Industrial H - Plataforma 13D  
Zona Franca Industrial  
9200-047 Caniçal - Madeira  
T +351 291 960 494 | F +351 291 960 497  
E alulider@sosoares.pt

### METALFER

Travessa do Bolegão, 146  
Apartado 1  
3754-904 Fermentelos  
T +351 234 729 740 | F +351 234 729 741  
E metalfer@sosoares.pt

### PERFIS OEIRAS

Rua da Colónia - Quinta da Cardosa  
Apartado 214 - Abrunheira  
2711-952 Sintra  
T +351 219 156 660 | F +351 219 156 661  
E perfis.oeiras@sosoares.pt

### PORTALEX

Estrada de S. Marcos, 23  
2735-521 Cacém  
T +351 210 412 500 | F +351 210 412 507  
E comercial@portalex.eu

### SOSOARES

Rua do Campo Alegre, 474  
4150-170 Porto  
T +351 226 096 709 | F +351 226 005 642  
E comercial@sosoares.pt



[www.sosoares.pt](http://www.sosoares.pt)



[www.portalex.eu](http://www.portalex.eu)